

Application Note

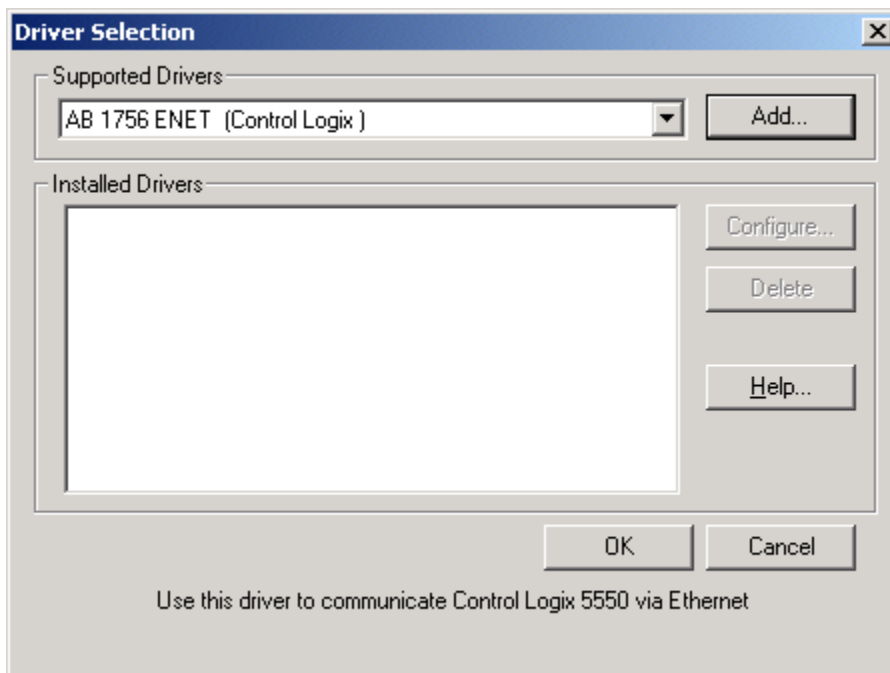
Using AN-X-DHP with the InGear OPC Server to Access PLC-5 Data



This application note describes how to configure the InGear AB OPC server to access PLC-5 data using the AN-X-DHP module.

Start the InGear AB OPC server and use the following steps to configure it to access data using the AN-X-DHP.

1. Select *Edit/Comm Settings...*
2. For the *Driver*, select the *AB 1756 ENET (ControlLogix)* driver and click *Add...*



3. For the *PLC IP Address or Hostname*, enter the AN-X-DHP IP address and click *OK*

Quest Technical Solutions

4110 Mourning Dove Court

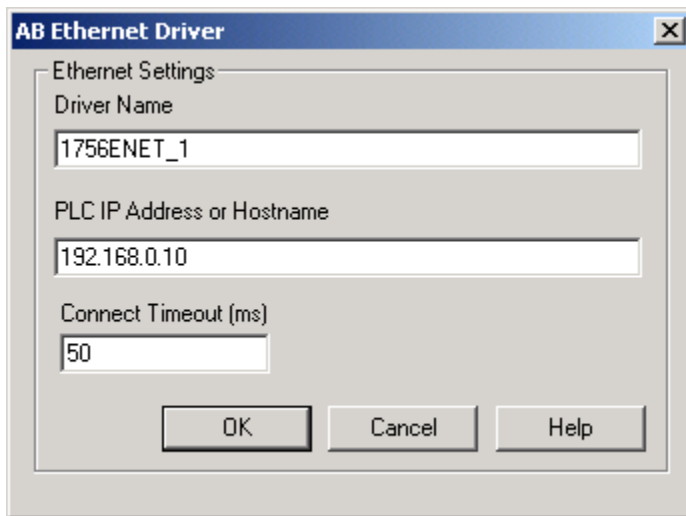
Melbourne FL 32934

321 757-8483

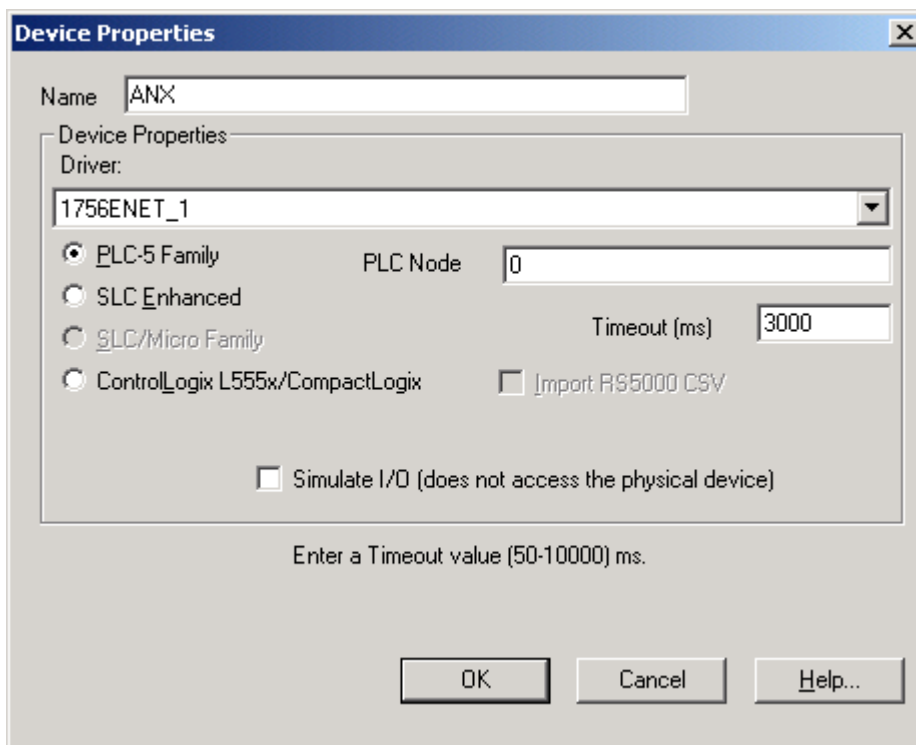
www.qtsi.biz



Using AN-X-DHP with the InGear OPC Server



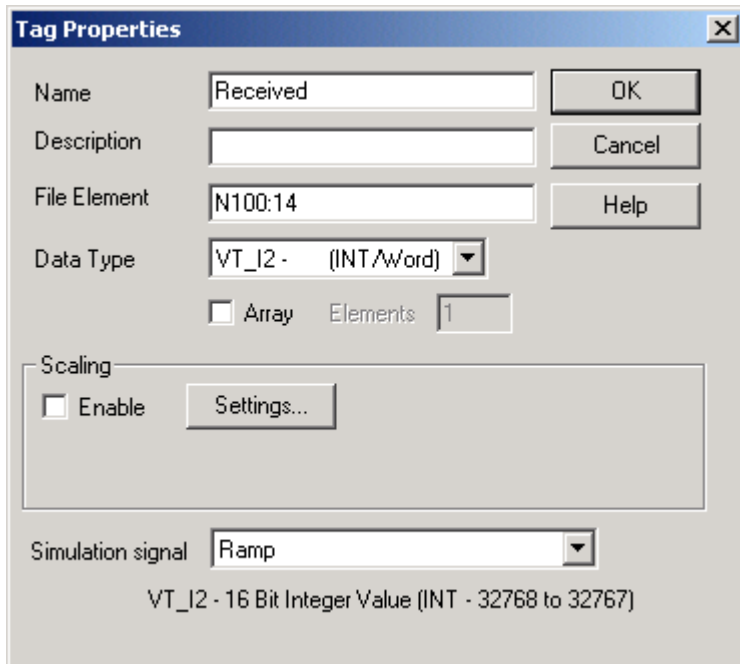
4. Click *OK* to accept the driver configuration
5. Select *Add/New Device...*
6. Give the device a *Name*, select the *Driver* you just added, select *PLC-5 Family* and set the *PLC Node* to the address (in decimal) of the destination PLC-5 on Data Highway Plus. Click *OK* to accept the device



7. Select *Add/New Tag...*
8. Give the tag a *Name*.

Using AN-X-DHP with the InGear OPC Server

9. Enter a file address, for example N7:0 or F8:3.
10. Enter the *Data Type*, for example VT_I2 – (INT/Word)
11. Click *OK* to accept the tag



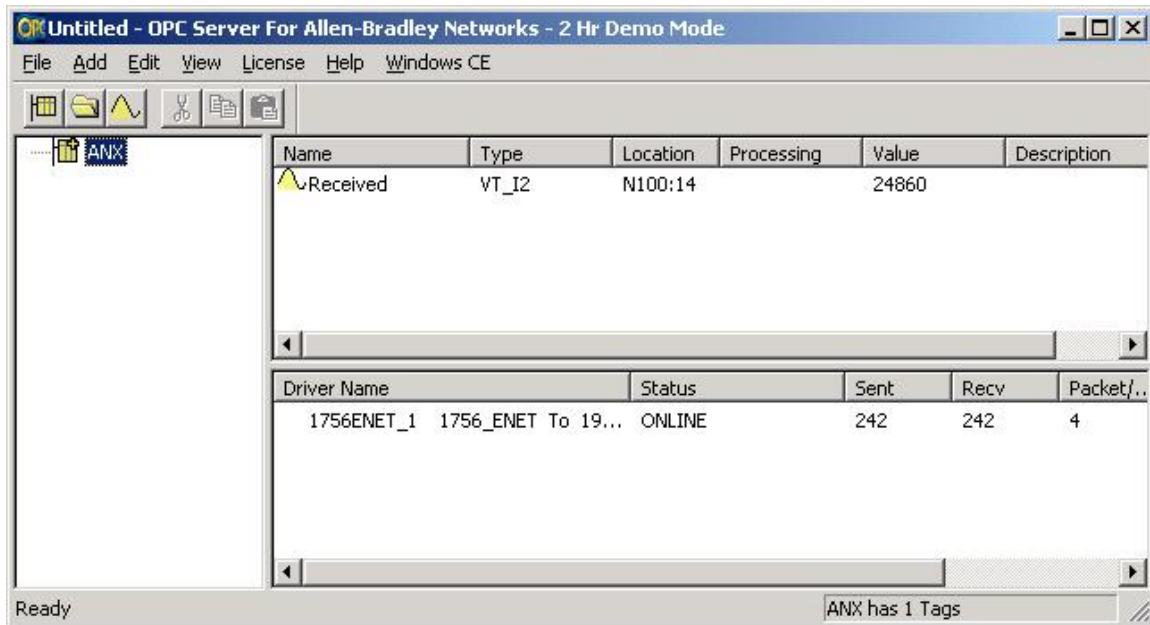
The image shows a 'Tag Properties' dialog box with the following fields and controls:

- Name:** Text box containing 'Received'. To its right is an 'OK' button.
- Description:** Empty text box. To its right is a 'Cancel' button.
- File Element:** Text box containing 'N100:14'. To its right is a 'Help' button.
- Data Type:** Dropdown menu showing 'VT_I2 - (INT/Word)'.
- Array:** A checkbox that is currently unchecked, followed by a text box labeled 'Elements' containing the value '1'.
- Scaling:** A section containing an 'Enable' checkbox (unchecked) and a 'Settings...' button.
- Simulation signal:** A dropdown menu showing 'Ramp'.
- Footer:** Text indicating 'VT_I2 - 16 Bit Integer Value (INT - 32768 to 32767)'.

You should now be able to access the tag from any client capable of communicating with the InGear AB OPC server.

Using AN-X-DHP with the InGear OPC Server

Select *View/Monitor* to go online and view tag data.



Quest Technical Solutions

4110 Mourning Dove Court

Melbourne FL 32934

321 757-8483

www.qtsi.biz

