



Where Automation Connects.


RadioLinx[®]
RLXIB-IHN

802.11n

Industrial Hotspot



March 30, 2010

SETUP GUIDE

Important Safety Information

The following Information and warnings pertaining to the radio module must be heeded:

WARNING – EXPLOSION HAZARD – DO NOT REPLACE ANTENNAS UNLESS POWER HAS BEEN SWITCHED OFF OR THE AREA IS KNOWN TO BE NON-HAZARDOUS.

- A** "THIS DEVICE CONTAINS A TRANSMITTER MODULE, FCC ID: SDZ-WA-1. PLEASE SEE FCC ID LABEL ON BACK OF DEVICE."
- B** "THIS DEVICE USES AN INTERNAL COMPACT FLASH RADIO MODULE AS THE PRIMARY RADIO COMPONENT. THE COMPACT FLASH RADIO MODULE DOES NOT HAVE AN FCC ID LABEL. THE COMPACT FLASH RADIO MODULE HAS NO USER SERVICEABLE PARTS."
- C** "THIS DEVICE COMPLIES WITH PART 15 OF THE FCC RULES. OPERATION IS SUBJECT TO THE FOLLOWING TWO CONDITIONS: (1) THIS DEVICE MAY NOT CAUSE HARMFUL INTERFERENCE, AND (2) THIS DEVICE MUST ACCEPT ANY INTERFERENCE RECEIVED, INCLUDING INTERFERENCE THAT MAY CAUSE UNDESIRE OPERATION."
- D** "THIS DEVICE AND ANY RADIO ACCESSORY SOLD BY PROSOFT MUST BE INSTALLED BY AN AUTHORIZED PROFESSIONAL INDUSTRIAL RADIO SYSTEM INTEGRATOR. FURTHER, ONLY RADIO ACCESSORIES SOLD BY PROSOFT AND SPECIFICALLY TESTED FOR USE WITH THIS DEVICE MAY BE USED WITH THIS DEVICE."
- E** "THE USER OF THIS EQUIPMENT CANNOT BE WITHIN 20 cm. FROM THE RADIATING ELEMENT DEVICE."
- F** "CHANGES OR MODIFICATIONS NOT EXPRESSLY APPROVED BY THE PARTY RESPONSIBLE FOR COMPLIANCE COULD VOID THE USER'S AUTHORITY TO OPERATE THE EQUIPMENT."

Industry Canada Requirements:

- A** "THIS DEVICE HAS BEEN DESIGNED TO OPERATE WITH AN ANTENNA HAVING A MAXIMUM GAIN OF 24 dB. AN ANTENNA HAVING A HIGHER GAIN IS STRICTLY PROHIBITED PER REGULATIONS OF INDUSTRY CANADA. THE REQUIRED ANTENNA IMPEDANCE IS 50 OHMS."
- B** "TO REDUCE POTENTIAL RADIO INTERFERENCE TO OTHER USERS, THE ANTENNA TYPE AND ITS GAIN SHOULD BE CHOSEN SUCH THAT THE EQUIVALENT ISOTROPICALLY RADIATED POWER (EIRP) IS NOT MORE THAN THAT REQUIRED FOR SUCCESSFUL COMMUNICATION."
- C** "THE INSTALLER OF THIS RADIO EQUIPMENT MUST INSURE THAT THE ANTENNA IS LOCATED OR POINTED SUCH THAT IT DOES NOT EMIT RF FIELD IN EXCESS OF HEALTH CANADA LIMITS FOR THE GENERAL POPULATION; CONSULT SAFETY CODE 6, OBTAINABLE FROM HEALTH CANADA."

WARNING:

This is a Class A product. In a domestic environment this product may cause radio interference in which case the user may be required to take adequate measures.

Antenna spacing requirements for user safety

It is important to keep the radio's antenna a safe distance from the user. To meet the requirements of FCC part 2.1091 for radio frequency radiation exposure, this radio must be used in such a way as to guarantee at least 20 cm between the antenna and users. Greater distances are required for high-gain antennas. The FCC requires a minimum distance of $1 \text{ mW} \cdot \text{cm}^2$ power density from the user (or 20 cm, whichever is greater).

If a specific application requires proximity of less than 20 cm, the application must be approved through the FCC for compliance to part 2.1093.

The installer of this radio equipment must ensure that the antenna is located or pointed in such a way that it does not emit RF fields in excess of Health Canada limits for the general population; refer to Safety Code 6, obtainable from Health Canada.

To reduce potential radio interference to other users, the antenna type and its gain should be so chosen that the equivalent isotropically radiated power (EIRP) is not more than that required for successful communication.

United States FCC & Industry Canada rules



RYK-WMIA199NI



Industry
Canada

Industrie
Canada

5265A-IHN

Note: This equipment has been tested and found to comply with the limits for a Class A digital device, pursuant to Part 15 of the FCC Rules. These limits are designed to provide reasonable protection against harmful interference when the equipment is operated in a commercial environment. This equipment generates, uses, and can radiate radio frequency energy and, if not installed and used in accordance with the instruction manual, may cause harmful interference to radio communications. Operation of this equipment in a residential area is likely to cause harmful interference in which case the user will be required to correct the interference at his own expense.

This device complies with Part 15 of the FCC Rules. Operation is subject to the following two conditions: The device may not cause harmful interference, and it must accept any interference received, including interference that may cause undesired operation.

This Class A digital apparatus complies with Canadian ICES-003.

Cet appareil numérique de la classe A est conforme à la norme NMB-003 du Canada.

CAUTION: Changes or modifications not expressly approved by the manufacturer could void the user's authority to operate the equipment.

CSA C22.2 213-M1987 and N. American Standard ANSI/ISA 12.12.01 listing

In accordance with Canadian Standard CSA C22.2 213-M1987 and ANSI Standard ISA 12.12.01, the RLXIB series radios have been UL listed for operation in Class I, Division 2, Groups A, B, C, and D Locations.

THIS EQUIPMENT IS SUITABLE FOR USE IN CLASS I, DIVISION 2, GROUPS A, B, C, AND D, HAZARDOUS LOCATIONS ONLY IF INSTALLED IN AN APPROVED ENCLOSURE AND POWERED BY A CLASS 2 POWER SUPPLY."Limited Power Source".

WARNING: EXPLOSION HAZARD! SUBSTITUTION OF ANY COMPONENTS MAY IMPAIR SUITABILITY FOR CLASS I, DIVISION 2.

WARNING – EXPLOSION HAZARD – Do not disconnect equipment unless power has been removed or the area is known to be non-hazardous.

AVERTISSEMENT - RISQUE D'EXPLOSION - LA SUBSTITUTION DE COMPOSANTS PEUT RENDRE CE MATERIEL INACCEPTABLE POUR LES EMPLACEMENTS DE CLASSE I, DIVISION 2.

WARNING: EXPLOSION HAZARD! DO NOT DISCONNECT EQUIPMENT UNLESS POWER HAS BEEN SWITCHED OFF OR THE AREA IS KNOWN TO BE NON HAZARDOUS.

AVERTISSEMENT - RISQUE D'EXPLOSION - AVANT DE DECONNECTER L'EQUIPEMENT, COUPER LE COURANT OU S'ASSURER QUE L'EMPLACEMENT EST DESIGNE NON DANGERUEX.

This radio has been designed to operate with the Omnidirectional Multi-Band Articulating Antenna, model A2502S-OA and having a maximum gain of 3dBi @ 2.4GHz and 4dBi @ 5.0GHz. Antennas not listed herein having a gain greater than that listed are strictly prohibited. The required antenna impedance is 50ohms nominal. This statement is in accordance with RSS-Gen Section 7.1.4.

The following label is applied to the radio to indicate that it is listed under ANSI/ISA standard 12.12.01 and CSA standard C22.2 213-M1987.

This Device contains a Radio Transmitter Module
FCC ID:RYK-WMIA199NI Canada IC5265A-IHN
Conforms to ANSI/ISA Std. 12.12.01 – Certified to CSA Std. C22.2 No. 213-M1987
Class I Division 2 10-24 Volts DC 6 Watts
48 Volts DC using the PoE Injector
Groups A, B, C & D
Max. Ambient: 60°C Temp Code T6

Note: The Temp. Code (Temperature Code) refers to the temperature of the rating of the RLXIB radio. The T6 code means that the maximum temperature of the unit did not exceed 135°C.

ATEX Approval



Ex nA nL IIC T6 X

-30C° ≤ Ta ≤ 60°C

ProSoft Technology, Inc., Bakersfield, CA USA

Model: RLXIB

S/N: XXXXXXXXXXX

Caution: Read instructions before operating in Hazardous Areas

N. America

The Radio must be installed inside an IP54 enclosure which requires a special tool for access.

Explosive Atmosphere

Power, Input, and Output (I/O) wiring must be in accordance with the authority having jurisdiction

- A** Warning – Explosion Hazard – Do not make or break connections in an explosive atmosphere.
- B** Caution – Use only approved recommended power supply.
- C** Warning - Power supply should be installed in a non-hazardous area.
- D** Warning – DO NOT OPEN WHEN ENERGIZED.
- E** These products are intended to be mounted in an IP54 enclosure. The devices shall provide external means to prevent the rated voltage being exceeded by transient disturbances of more than 40%. This device must be used only with ATEX certified backplanes.

European CE certification

The radio modem has been approved for operation under the RTT&E directive, passing the following tests: ETS300-826 (EMC), ETS300-328 (Functionality), and EN60950 (Safety).

The following is the appropriate label that is applied to the radio modem product line to indicate the unit is approved to operate with CE certification:



The following is the appropriate label that is applied to the radio modem product line shipping package to indicate the unit is approved to operate with CE certification:

AUS	B	DK	FIN
F	D	GR	IRE
I	LUX	NL	P
E	S	UK	

Note: Member states in the EU with restrictive use for this device are crossed out. This device is also authorized for use in all EFTA member states (CH, ICE, LI, and NOR).

IMPORTANT: This device is a 2.4-GHz, low-power RF device intended for office and home use in all EU and EFTA member states, except in France where restrictive use applies.

EU Requirements

1. For outdoor use, France has a frequency restriction of 2.4GHz - 2.454GHz for an output power greater than 10mW and below 100mW.
2. For outdoor use in France, the output power is restricted to 10mW in the frequency range of 2.454GHz – 2.4835GHz.
3. 5.15GHz – 5.35GHz is restricted to 200mW EIRP throughout the European Union.

Power over Ethernet Injector and Accessories "Warning"

The PoE Injector was not a part of the hazardous location or ATEX certification. Therefore, if an injector is used to power any of the radios, the PoE injector must be installed/located outside of any area that could be known to be hazardous. The AC power adaptor was not a part of the haz loc certification.

The RLXIB series were tested and certified to hazardous location and ATEX without any accessories included in this certification. Therefore, any accessory added to the RLXIB series radios must be used in an area known to be non-hazardous as they have not been subjected to hazardous location and ATEX certifications.

The preferred method of powering the radios is using the supplied power adaptor but If the PoE injector is used in an ordinary location "only", the PoE injector must be Listed. If the PoE injector is used instead of the supplied power adaptor, all of the wiring to and from the injector must be routed/installed inside building/plant and never routed/installed outside of the building/plant.

Your Feedback Please

We always want you to feel that you made the right decision to use our products. If you have suggestions, comments, compliments or complaints about the product, documentation, or support, please write or call us.

ProSoft Technology

5201 Truxtun Ave., 3rd Floor

Bakersfield, CA 93309

+1 (661) 716-5100

+1 (661) 716-5101 (Fax)

www.prosoft-technology.com

support@prosoft-technology.com

Copyright © 2010 ProSoft Technology, Inc., all rights reserved.

RLXIB-IHN Setup Guide

3/30/2010

ProSoft Technology[®], ProLinx[®], inRAx[®], ProTalk[®], and RadioLinx[®] are Registered Trademarks of ProSoft Technology, Inc. All other brand or product names are or may be trademarks of, and are used to identify products and services of, their respective owners.

ProSoft Technology[®] Product Documentation

In an effort to conserve paper, ProSoft Technology no longer includes printed manuals with our product shipments. User Manuals, Datasheets, Sample Ladder Files, and Configuration Files are provided on the enclosed CD-ROM, and are available at no charge from our web site: www.prosoft-technology.com

Printed documentation is available for purchase. Contact ProSoft Technology for pricing and availability.

North America: +1.661.716.5100

Asia Pacific: +603.7724.2080

Europe, Middle East, Africa: +33 (0) 5.3436.87.20

Latin America: +1.281.298.9109

Contents

Important Safety Information.....	3
Antenna spacing requirements for user safety	3
United States FCC & Industry Canada rules	4
CSA C22.2 213-M1987 and N. American Standard ANSI/ISA 12.12.01 listing	4
ATEX Approval	5
European CE certification	5
EU Requirements.....	5
Power over Ethernet Injector and Accessories "Warning".....	6
Your Feedback Please.....	6
ProSoft Technology® Product Documentation.....	6
1 Before You Begin	9
1.1 Install the WirelessN Discovery Tool.....	10
1.2 Start WirelessN Discovery Tool	11
1.3 Plug In the Cables	12
1.4 Detecting the Radio.....	13
1.5 Assign an IP Address	14
1.6 Set up the Master Radio.....	15
1.7 Save the Radio Configuration	18
2 Adding and Configuring Additional Radios	19
3 Verify Communication	21
4 If You Encounter Problems	23
4.1 Check the Ethernet cable	23
4.2 LED display	24
4.3 Retrieve the Default Password.....	25
4.4 Starting Over	26
5 What's Next?	27

1 Before You Begin

In This Chapter

- ❖ Install the WirelessN Discovery Tool 10
- ❖ Start WirelessN Discovery Tool 11
- ❖ Plug In the Cables 12
- ❖ Detecting the Radio 13
- ❖ Assign an IP Address 14
- ❖ Set up the Master Radio 15
- ❖ Save the Radio Configuration 18

The following components are included with your RLXIB-IHN radio, and are all required for installation and configuration.

Important: Before beginning the installation, please verify that all of the following items are present.

Qty.	Part Name	Part Number	Part Description
1	RLXIB-IHN Radio	RLXIB-IHN	Industrial Hotspot
1	Cable	085-1007	6 foot RS232 serial cable
1	Cable	RL-CBL025	5 foot Ethernet Straight-Thru Cable (Gray)
1	Antenna	A2502S-OA	2 dBi Omni RP-SMA articulating, 2.4/5GHz
1	Power Supply	RL-PS005-2	AC Power Adapter, 12V1.25A w/2 pin & 4 plug Set
1	ProSoft Solutions CD		Contains sample programs, utilities and documentation for the RLXIB-IHN module.

If any of these components are missing, please contact ProSoft Technology Support for replacement parts.

In addition, you will need:

- A personal computer equipped with an Ethernet port
- IP address, Subnet Mask and Gateway information for each RLX device you plan to install. You can obtain this information from your system administrator.

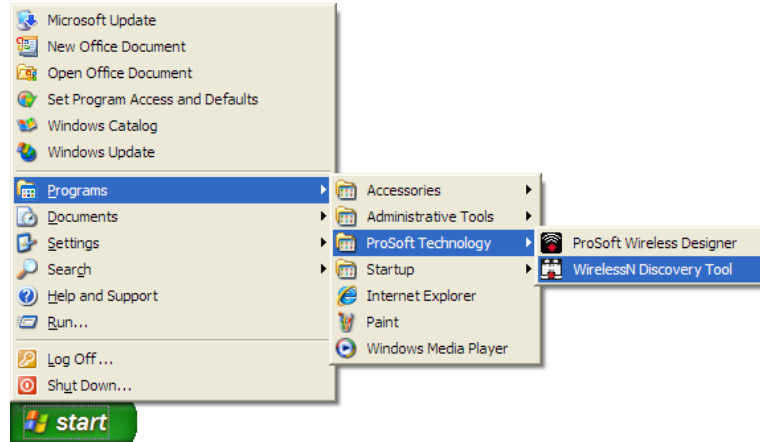
Note: This Startup Guide is designed for use with two RLXIB-IHN radios. One radio will be setup as a Master (AP) while the other radio will be set up as a Repeater.

1.1 Install the WirelessN Discovery Tool

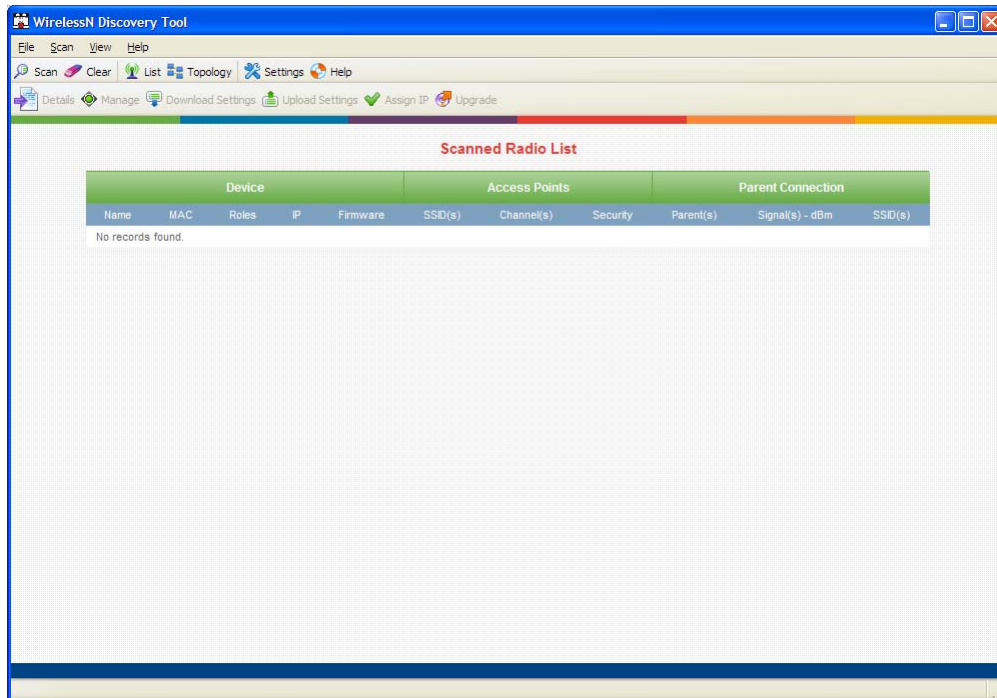
- 1 Insert the ProSoft Solutions CD in your CD-ROM drive. On most computers, a menu screen will open automatically. If you do not see a menu within a few seconds, follow these steps:
 - a Click the Start button, and then choose Run.
 - b In the Run dialog box, click the Browse button.
 - c In the Browse dialog box, click "My Computer". In the list of drives, choose the CD-ROM drive where you inserted the ProSoft Solutions CD.
 - d Select the file **prosoft.exe**, and then click Open.
 - e On the Run dialog box, click OK.
- 2 On the CD-ROM menu, select **WIRELESSN DISCOVERY TOOL**. This action opens the Setup Wizard for WirelessN Discovery Tool.
- 3 Follow the instructions on the installation wizard to install the program with its default location and settings.
- 4 When the installation finishes, you may be prompted to restart your computer if certain files were in use during installation. The updated files will be installed during the restart process.

1.2 Start WirelessN Discovery Tool

- 1 Click the **START** button, and then navigate to **PROGRAMS / PROSOFT TECHNOLOGY**



- 2 Click to start **RADIOLINX WIRELESSN DISCOVERY TOOL**.



The window lists all the radios your computer can access. The MAC ID number is essentially the serial number of the radio; this number is also printed on the side of the radio. If a radio listing does not appear in the window, click the **SCAN** button. If you still do not see a radio listing, see Troubleshooting in the RLXIB-IHN User Manual.

1.3 Plug In the Cables

You can configure the RLXIB-IHN using the Ethernet port on the radio. On the underside are three ports; Ethernet, Serial and Power (10 to 24 VDC 6 W).



From left to right: Power connector, Serial port and Ethernet port.

Use the Ethernet cable to configure the radio for the first time.

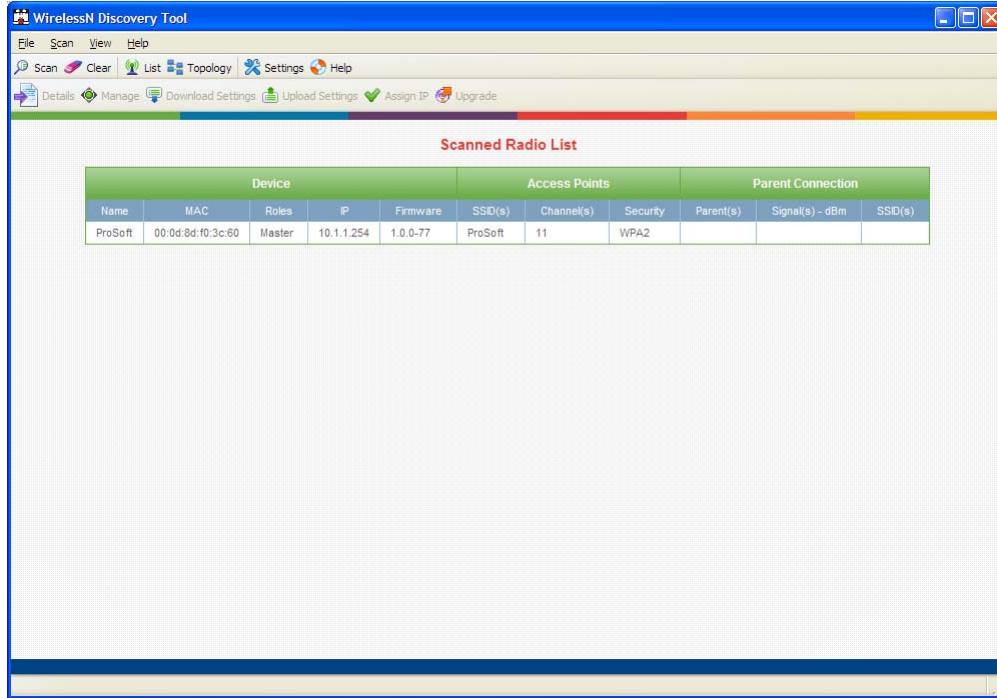
Note: After you plug in the power cable and Ethernet cable, the radio performs a startup procedure that includes a self-test, loading the main program, and initializing the radio. The front panel LEDs will illuminate after approximately two seconds. The entire startup procedure can take up to 90 seconds.

After the startup procedure has completed successfully, the Power LED should be green, meaning that the radio has power. The Ethernet LED should also be green, meaning that the Ethernet connection is working. The RF Transmit and RF Receive LEDs should blink.

For information on making connections, see Radio Power Requirements and Cable Specifications in the RLXIB-IHN User Manual.

1.4 Detecting the Radio

After the radio has completed its startup procedure, the radio will appear in the WirelessN Discovery Tool window.



The window lists all the radios your computer can access. The MAC ID number is essentially the serial number of the radio; this number is also printed on the side of the radio. If a radio listing does not appear in the window, click the **SCAN** button on the toolbar. If you still do not see a radio listing, refer to Diagnostics and Troubleshooting in the RLXIB-IHN User Manual.

1.5 Assign an IP Address

You need the IP address to log into the RadioLinx Configuration Manager and configure the radio settings. If the radio is connected to a network with a DHCP server, the radio may already have an IP address assigned to it.

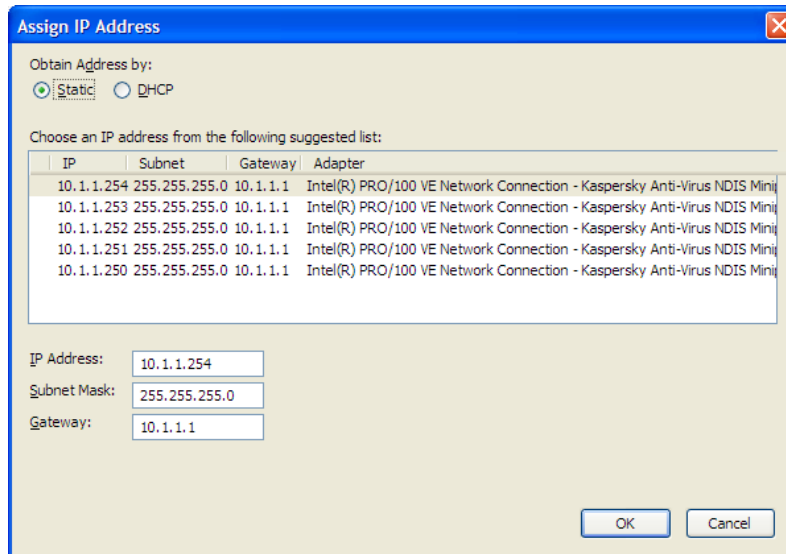
If a DHCP server is not available, or if you prefer to assign a static IP address, you can enter an IP address here.

To assign an IP Address

- 1 In WirelessN Discovery Tool, click to select the radio.

Tip: If a radio listing does not appear in the window, click the Scan button on the toolbar. If you still do not see a radio listing, refer to Diagnostics and troubleshooting in the RLXIB-IHN User Manual.

- 2 Right-click on the radio to open a shortcut menu, and then choose **ASSIGN IP**. This action opens the Assign IP Address dialog box.



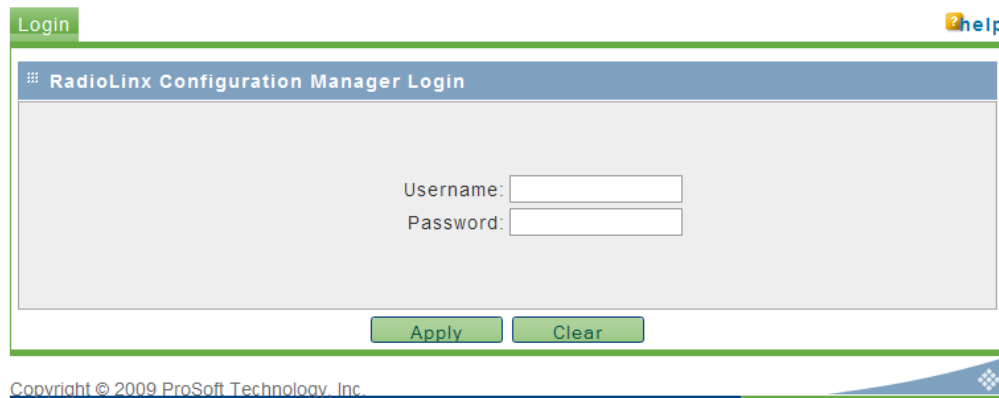
- 3 Select one of the unused IP addresses, and then click **OK**.

Tip: You must also assign a Gateway address. The Gateway assigned to your PC's Ethernet port is offered as a suggestion. If your PC does not have a Gateway setting, the Gateway field in the Assign IP Address dialog will be blank. You will need to enter a Gateway before clicking OK.

For information, see Radio Access settings in the RLXIB-IHN User Manual.

1.6 Set up the Master Radio

To configure the radio, double click on the radio (Radio1) in the WirelessN Discovery Tool window. This action opens a web browser (for example Microsoft Internet Explorer or Firefox) and loads the Radio's web configuration interface.



Administrator login

With administrative privileges, you can view or modify the configuration of the access point.

Enter the user name in lower case, no quotes.

- The default administrator user name is "admin"
- The default password is "password"
- The user name and password are case sensitive

Guest login

With guest privileges, you can view the existing configuration, but you cannot make changes.

Enter the user name in lower case, no quotes.

- The default guest user name is "guest".
- The default password is "password".

Important: You should change the default user names and passwords, write down the settings, and keep a copy in a safe place, to protect the radio from being reconfigured or viewed by unauthorized users.

Note: The master is the "root" or central radio in a network. You must have at least one master radio per network. For redundancy, you can assign more than one master to a network.

The screenshot shows the ProSoft RadioLinx web interface. The top navigation bar includes 'Configuration', 'Diagnostics', and 'Utilities'. Below it, a secondary navigation bar lists various settings like 'Main', 'Radio', 'Security', etc. The main content area is titled 'IPv6 Configuration' and is divided into two sections: 'Overall' and 'Radio 1'.
Overall Section:
Unit Name: Master
MAC ID: 00:0D:8D:F0:3C:57
Unit up Time: 0 days, 0 hours, 10 minutes, 29 seconds
Firmware: 1.0.0-77
Obtain IP Address by: DHCP
IP Address: 10.1.1.212
IP Subnet Mask: 255.255.255.0
Gateway IP Address: 10.1.1.1
Radio 1 Section:
Link Status: Master
Parent: (empty)
Link Time: (empty)
RSSI: (empty)
SNR: (empty)
Current Channel: 0
11h Status:
Radar event: None
Mode: Master
Radio MAC address: Use host MAC address, Use this MAC address: 00:00:00:00:00:00
SSID: Prosoft
Hide SSID:
Channel Selection: Auto
Security: WPA2-Personal
WPA/WPA2 Key: [masked]
WEP Key: (empty)
Power Constraint: 15 (dBm)
Buttons: Apply, Clear

To configure a Master radio, make the following changes to the web configuration form:

Overall Settings

- **Unit Name:** Enter a unique name for the radio.
- **Obtain IP Address by:** If a DHCP (Dynamic Host Control Protocol) server is configured on your local area network, the DHCP server can assign IP addresses automatically.

If you prefer to assign a Static (Fixed) IP address, select **STATIC**, and then enter the IP Address, Subnet Mask and Default Gateway in the Overall area of the Radio web configuration form.

Important: If you intend to assign IP addresses manually, you must not duplicate an IP address that is already in use on your network. If you are not sure what IP addresses are available, ask your network administrator for assistance.

- Select **MASTER** as the radio mode.
- **SSID:** Assign a network name (SSID) of up to 32 characters. The radio uses this name in all network references. All radios in a network must have the same SSID.
- **Channel Selection:** Choose the channel selection mode.
Network channels allow radios to avoid sharing a frequency with other networks in the same location. For most applications, you should choose a specific channel number. If you choose **AUTO**, the radio will scan available channels, and will select a channel that appears to have little traffic.

Important: The RLXIB-IHN radio is supplied with a dual-band antenna that supports both frequency ranges. If you use a different antenna with the RLXIB-IHN radio, you must choose a channel and frequency range supported by the antenna.

- **Security:** Encryption scrambles data so that only intended viewers can decipher and understand it. Although "none" is an available encryption type, ProSoft Technology strongly recommends encrypting all data sent and received from every radio on your network with WPA2, to help prevent your data from being intercepted and decoded.
- **WPA/WPA2 Key:** To use AES encryption on packets sent between the radios, select **WPA2 - PERSONAL** in the Encryption Type field. Next, in the WPA phrase field, enter a pass phrase of between eight and 63 normal keyboard characters. This phrase automatically generates an encryption key of 128 hexadecimal characters. The default pass phrase is "passphrase" (lower case, no quotes). For more information on encryption, see Security settings.

Because you must assign the same Network SSID and WPA phrase to the repeater radios later in this procedure, you should write down the settings.

Note: Network SSID and WPA key are both case-sensitive.

Network SSID: _____

WPA phrase: _____

1.7 Save the Radio Configuration

Before browsing to other pages in the Radio Configuration window, you must apply your changes. Click **APPLY** to save your configuration and restart the radio.

Note: To discard your changes and start over, click CLEAR.

Apply

Clear

2 Adding and Configuring Additional Radios

At this point you should attach and configure any additional radios you will be using. Ensure that any new radios use a unique name, but the same Network SSID as your master. The only difference in procedure will be in setting up each additional radio. Instead of setting your additional radios as Masters, they should be set as Repeaters or, more rarely, Clients, depending on their intended purpose.

3 Verify Communication

When configured, the Roles column identifies each radio as a Master, Repeater, or Client.

The screenshot shows the 'WirelessN Discovery Tool' application window. The main content area displays a table titled 'Scanned Radio List'. The table is organized into three main sections: 'Device', 'Access Points', and 'Parent Connection'. Each section has its own set of sub-columns. The 'Device' section includes Name, MAC, Roles, IP, and Firmware. The 'Access Points' section includes SSID(s), Channel(s), and Security. The 'Parent Connection' section includes Parent(s), Signal(s) - dBm, and SSID(s). The table contains three rows of data representing different radio roles: Client, Repeater, and Master.

Device					Access Points			Parent Connection		
Name	MAC	Roles	IP	Firmware	SSID(s)	Channel(s)	Security	Parent(s)	Signal(s) - dBm	SSID(s)
Client56-211	00:0d:8d:f0:3c:56	Client	192.168.1.211	1.0.0-82		0				
I2N_Repeater6F-213	00:0d:8d:f0:3c:6f 00:0d:8d:f0:3c:70	Repeater Repeater	192.168.1.213	1.0.0-82	ProSoft	11 11	WPA2	00:0d:8d:f0:3c:57	-52	ProSoft
Master57-212	00:0d:8d:f0:3c:57	Master	192.168.1.212	1.0.0-82	ProSoft	11	WPA2			

At the bottom of the window, a status bar shows a message: [02/02/2010 12:56:47] Scan initiated successfully.

Observe the LEDs to ensure good link quality, as explained in LED display (page 24). After configuring a repeater, you can unplug the Ethernet cable from it.

4 If You Encounter Problems

In This Chapter

❖ Check the Ethernet cable	23
❖ LED display	24
❖ Retrieve the Default Password	25
❖ Starting Over	26

4.1 Check the Ethernet cable

If you connect a radio and the Ethernet LED does not light on the radio, there may be a problem with the Ethernet cable. Verify that the cable is plugged into the radio at one end, and to an Ethernet hub or a 10/100 Base-T Ethernet switch at the other end.

Note: The RLXIB-IHN radio auto-detects the Ethernet connection type, and does not require a crossover cable for direct connection to a PC.

4.2 LED display

The RLXIB-IHN front panel includes a set of LEDs that indicate the radio's status:

LED	Description
Power	This green LED indicates that the radio has power.
RF Transmit	This yellow LED indicates RF transmission.
RF Receive	This green LED indicates RF reception.
Serial	Reserved for future use.
Ethernet	If this green LED is on, the Ethernet cable is connected. If this LED is flashing, an Ethernet packet is being transmitted or received.
Signal Strength	If only one of these three LEDs is on, then the radio is linked. If two LEDs are on, the radio's signal strength is fair. If all three LEDs are on, the signal strength is good.

If a radio is configured as a master, the middle light of the three Signal Strength LEDs will always be on, and the bottom Signal Strength LED will always be off. The top LED on the master will flash if any radios are linked to this master.

After you first plug in the power cable and Ethernet cable to the radio, the Power/Status LED should be green, meaning that the radio has power. If the Ethernet LED is green, then the Ethernet connection is working. The RF Transmit and RF Receive LEDs should blink.

All three LEDs will blink just after the radio links to the Master's signal but before it has been fully authenticated. Normally you will see this last only a few seconds. If it blinks longer, or never turns on, it usually means the encryption keys are not correct.

4.3 Retrieve the Default Password

If you forget your password, you will be unable to change the radio settings. You can retrieve the default password to use the software again, but you will lose all the settings you programmed before. To retrieve the default password and return the radio to its default settings, follow these steps:

- 1 Turn off power to the radio.
- 2 Locate the reset hole, located to the left of the power connector.



- 3 Turn on power to the radio.
- 4 Insert the end of a paperclip or similar device into the hole, and wait for the Power LED to turn green.
- 5 When the Power LED turns green, press and hold the reset button for at least five seconds.
- 6 The radio will reload its default settings, including the password. You should now be able to log in using the default password, which is "password".

4.4 Starting Over

If necessary, you can always restore the default settings that were present when the radio was manufactured.

- 1 Open the Radio Configuration/Diagnostic Utility
- 2 Log into the radio
- 3 Click the Utilities button, and then click the Default button.

This will remove all changes you have made to the radio configuration, including addressing, naming, and security settings.

5 What's Next?

Congratulations! Your wireless network is up and running. You now need to connect your wireless Hotspots to your network devices. ProSoft Technology provides application connection instructions for numerous applications. Refer to the RadioLinx Application Connection Guide located on the RadioLinx Solutions CD.