



**Where  
Automation  
Connects.**

## Technical Note



# MVI56(E)-MNETR Add-On Instruction Installation Guide

Modbus TCP/IP Ethernet Communication Module  
**Document Code: 221181**

Author: ProSoft Technical Publications  
Date: November 06, 2009



### Asia Pacific

#### Malaysia Office

Phone: +603.7724.2080  
asiapc@prosoft-technology.com  
*Languages spoken: Chinese, English, Japanese*

#### China Office

Phone: +86.21.5187.7337  
asiapc@prosoft-technology.com  
*Languages spoken: Chinese, English*

### Europe

#### France Office

Phone: +33 (0)5.34.36.87.20  
support.emea@prosoft-technology.com  
*Languages spoken: French, English*

#### Middle East and Africa

Phone: +971.(0)4.214.6911  
mea@prosoft-technology.com  
*Languages spoken: English, Hindi*

### North America

#### California and Wisconsin Offices

Phone: +1 661.716.5100  
support@prosoft-technology.com  
*Languages spoken: English, Spanish*

### Latin America

#### Brasil Office

Phone: +55.11.5083.3776  
brasil@prosoft-technology.com  
*Languages spoken: Portuguese, English*

#### Mexico and Central America Office

Phone: +52.222.3.99.6565  
soporte@prosoft-technology.com  
*Languages spoken: Spanish, English*

#### Regional Office

Phone: +1.281.298.9109  
latinam@prosoft-technology.com  
*Languages spoken: Spanish, English*

## Document Information

|                      |   |
|----------------------|---|
| <b>Author</b>        | ProSoft Technical Publications              |
| <b>Description</b>   | Modbus TCP/IP Ethernet Communication Module |
| <b>Date</b>          | November 06, 2009                           |
| <b>Revision</b>      | 2.04.001                                    |
| <b>Product Name</b>  | MVI56(E)-MNETR                              |
| <b>Document Code</b> | 221181                                      |

### ProSoft Technology

5201 Truxtun Ave., 3rd Floor  
Bakersfield, CA 93309  
+1 (661) 716-5100  
+1 (661) 716-5101 (Fax)  
www.prosoft-technology.com

Copyright © ProSoft Technology, Inc. 2009. All Rights Reserved.

November 06, 2009

ProSoft Technology ® ProLinX ®, inRAX ®, ProTalk®, and RadioLinX ® are Registered Trademarks of ProSoft Technology, Inc. All other brand or product names are or may be trademarks of, and are used to identify products and services of, their respective owners.

## How to contact us: Sales & Support

All ProSoft Technology® products are backed with unlimited technical support. Contact our worldwide Technical Support team directly by phone or email:

### Asia Pacific

+603.7724.2080, support.asia@prosoft-technology.com  
Languages spoken include: Chinese, Japanese, English

### Europe – Middle East – Africa

+33 (0) 5.34.36.87.20, support.EMEA@prosoft-technology.com  
Languages spoken include: French, English  
europe@prosoft-technology.com,  
fax to +33 (0) 5.61.78.40.52

### North America

+1.661.716.5100, support@prosoft-technology.com  
Languages spoken include: English, Spanish  
orders@prosoft-technology.com,  
fax to +1 661.716.5101

### Latin America (Sales only)

+1.281.298.9109, latinam@prosoft-technology.com  
Languages spoken include: Spanish, English

### Brasil

+55-11.5084.5178, eduardo@prosoft-technology.com  
Languages spoken include: Portuguese, English

## Contents

|  |          |
|--|----------|
| Document Information .....   | 2        |
| <b>ADD MODBUS TCP/IP ETHERNET COMMUNICATION TO CONTROLLOGIX WITH AN ADD-ON INSTRUCTION FOR RSLOGIX® 5000 VERSION 16.....</b> | <b>4</b> |
| Introduction .....   | 4        |
| Instructions .....   | 5        |
| Benefits.....  | 13       |

## Add Modbus TCP/IP Ethernet Communication to ControlLogix with an Add-On Instruction for RSLogix® 5000 Version 16

### In This Chapter

- ❖ Introduction ..... 4
- ❖ Instructions ..... 5
- ❖ Benefits ..... 13

### Introduction

Beginning with version 16 of RSLogix™ 5000 software, Rockwell Automation added an extremely helpful feature to make it easier than ever to set up third party modules, custom code, or proprietary code. They called this new feature an "Add-On Instruction" (AOI). This AOI feature allows third party vendors, panel builders, and system integrators to create ladder logic code that can be protected for safety or security reasons and can be locked to ensure that the code remains unchanged.

ProSoft Technology®'s inRAX® Modbus TCP/IP Ethernet Communication Module for ControlLogix®, the MVI56(E)-MNETR, is provided with an Add-On Instruction to allow easy integration of the module into new or existing RSLogix 5000 Version 16 and newer projects.

ProSoft Technology® has enhanced the MVI56(E)-MNETR module's Add-On Instruction in a way that will significantly simplify installation.

Now users can integrate the module into a new or existing project by importing a single ladder logic import file, as opposed to importing multiple User Defined Data Types and ladder logic rungs, one-by-one.

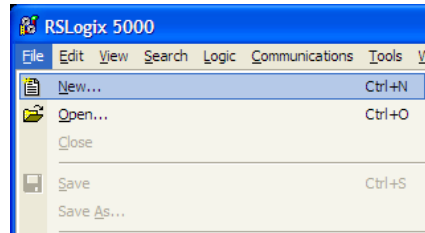
The entire ladder logic required by the MVI56(E)-MNETR is encapsulated in one, single Add-On Instruction. And, when the ladder logic .L5X file is imported, it automatically creates all the required User-Defined Data Types, Controller Tags, and the Add-On Instruction logic, all while adding the preconfigured AOI instruction to the ladder rung.



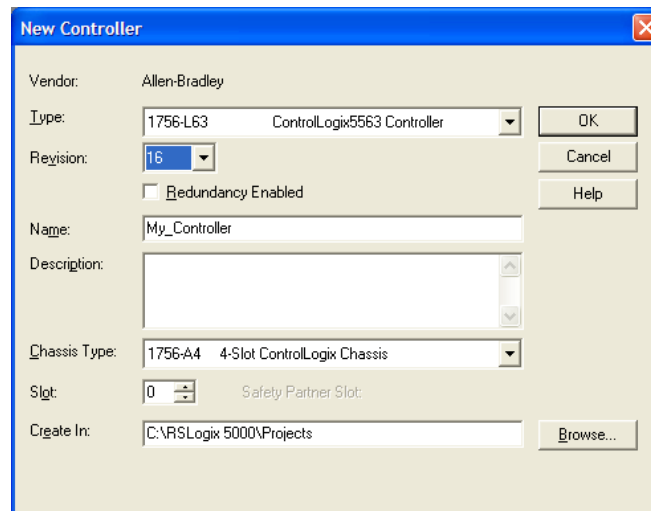
This new way of importing an AOI as a completed ladder rung enables quicker and easier integration of the MVI56(E)-MNETR with fewer chances for human typographical errors and ladder coding or setup errors.

## Instructions

- 1 Open the **FILE** menu, and then choose **NEW...**

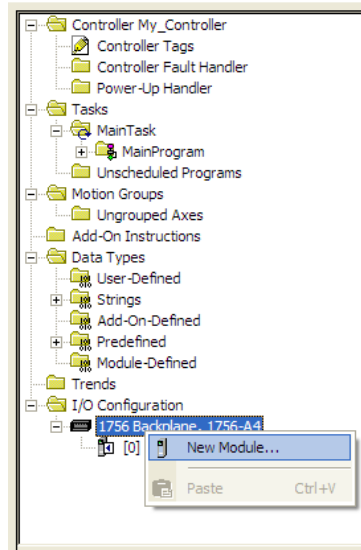


- 2 Select your ControlLogix controller model.
- 3 Select **REVISION 16**.
- 4 Enter a name for your controller, such as "My\_Controller".
- 5 Select your ControlLogix chassis type.
- 6 Select **SLOT 0** for the controller.

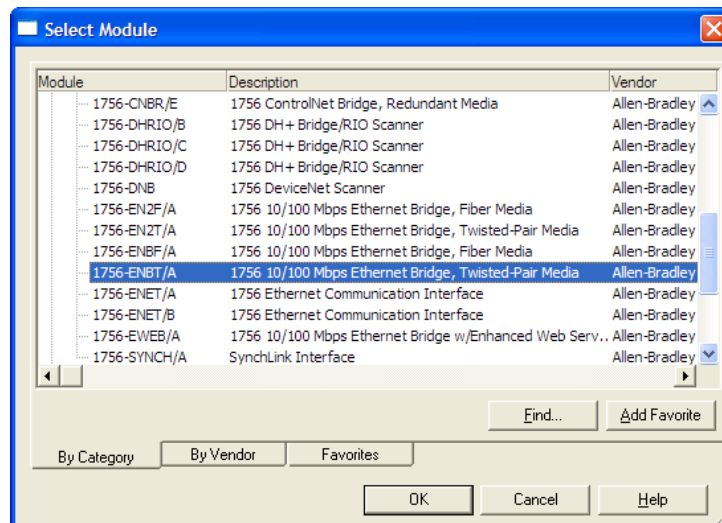


Next, create the network.

- 1 Right-click **I/O CONFIGURATION** and choose **NEW MODULE...**

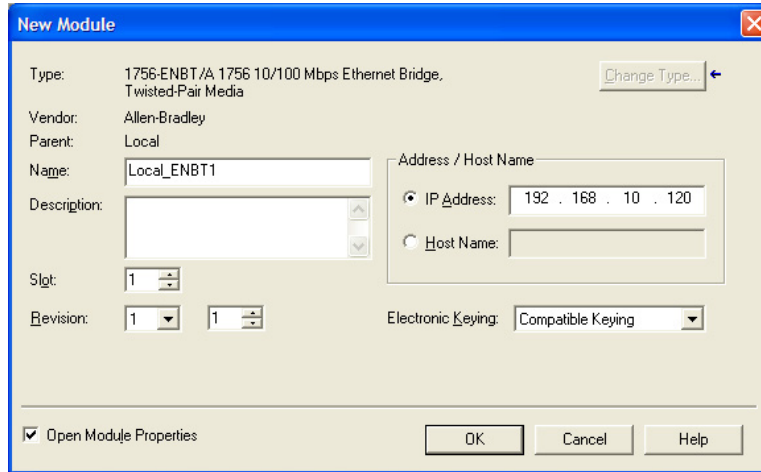


- 2 Expand the **COMMUNICATIONS** module selections and then select the Ethernet Bridge module that matches your hardware. This example uses a 1756-ENBT/A module.

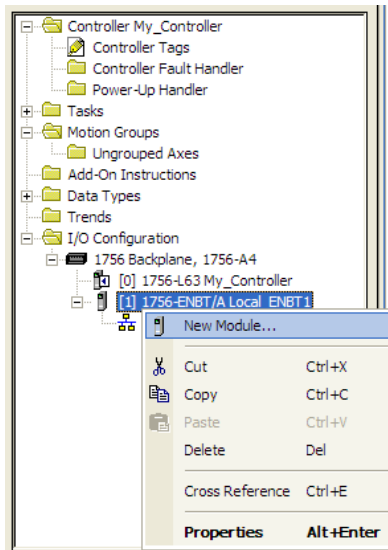


Note: If you are prompted to "Select Major Revision", choose the lower of the available revision numbers.

- 3 Name the ENBT/A module, then set the IP Address and slot location in the local rack with the ControlLogix processor.

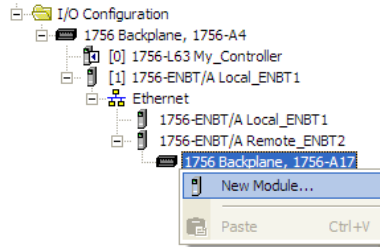


- 4 Click **OK**.
- 5 Next, select the **1756-ENBT** module that you just created in the Controller Organization pane and click the right mouse button to open a shortcut menu. On the shortcut menu, choose **NEW MODULE**.

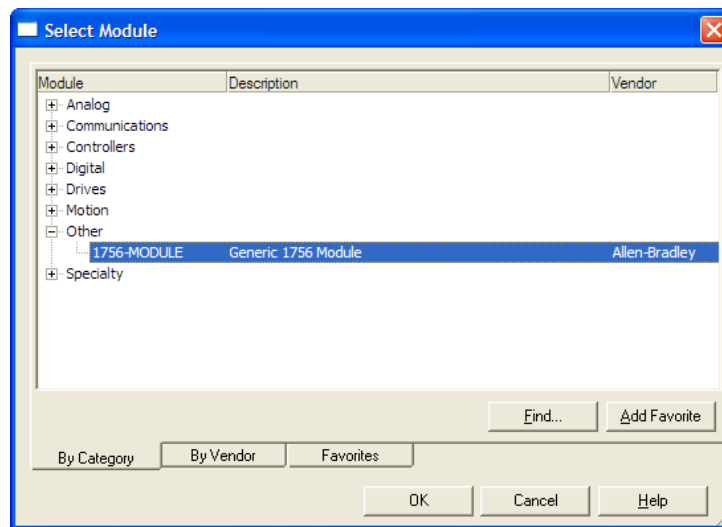


- 6 Repeat steps 2 and 3 to add the second EtherNet/IP module to the remote rack.

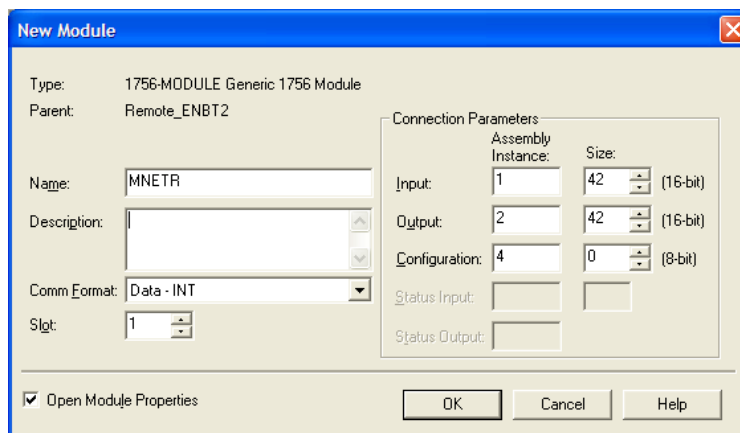
- Next, select the remote **1756 BACKPLANE** node in the Controller Organization pane underneath the remote rack EtherNet/IP module you just created and click the right mouse button to open a shortcut menu. On the shortcut menu, choose **NEW MODULE**.



This action opens the **SELECT MODULE** dialog box.



- Select the **1756-MODULE (GENERIC 1756 MODULE)** from the list and click **OK**. This action opens the **NEW MODULE** dialog box.

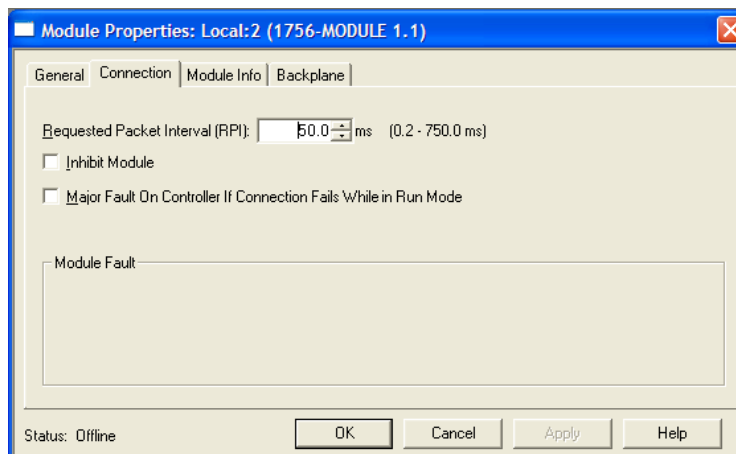




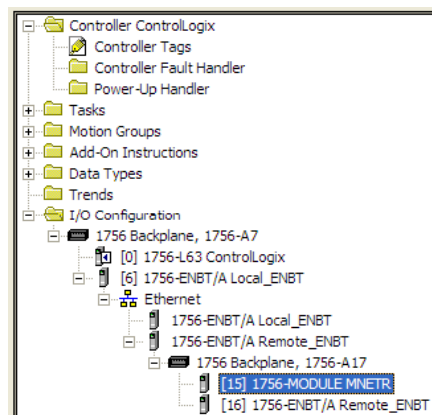
9 Set the Module Properties values as follows:

| Parameter                       | Value   |
|---------------------------------|---|
| Name                            | Enter a module identification string. The recommended value is Modbus TCP/IP Ethernet.    |
| Description                     | Enter a description for the module. Example: Modbus TCP/IP Ethernet Communication Module. |
| Comm Format                     | Select <b>DATA-INT (Very Important)</b>   |
| Slot                            | Enter the slot number in the rack where the MVI56(E)-MNETR module is or will be located.  |
| Input Assembly Instance         | 1   |
| Input Size                      | 42  |
| Output Assembly Instance        | 2   |
| Output Size                     | 42  |
| Configuration Assembly Instance | 4   |
| Configuration Size              | 0   |

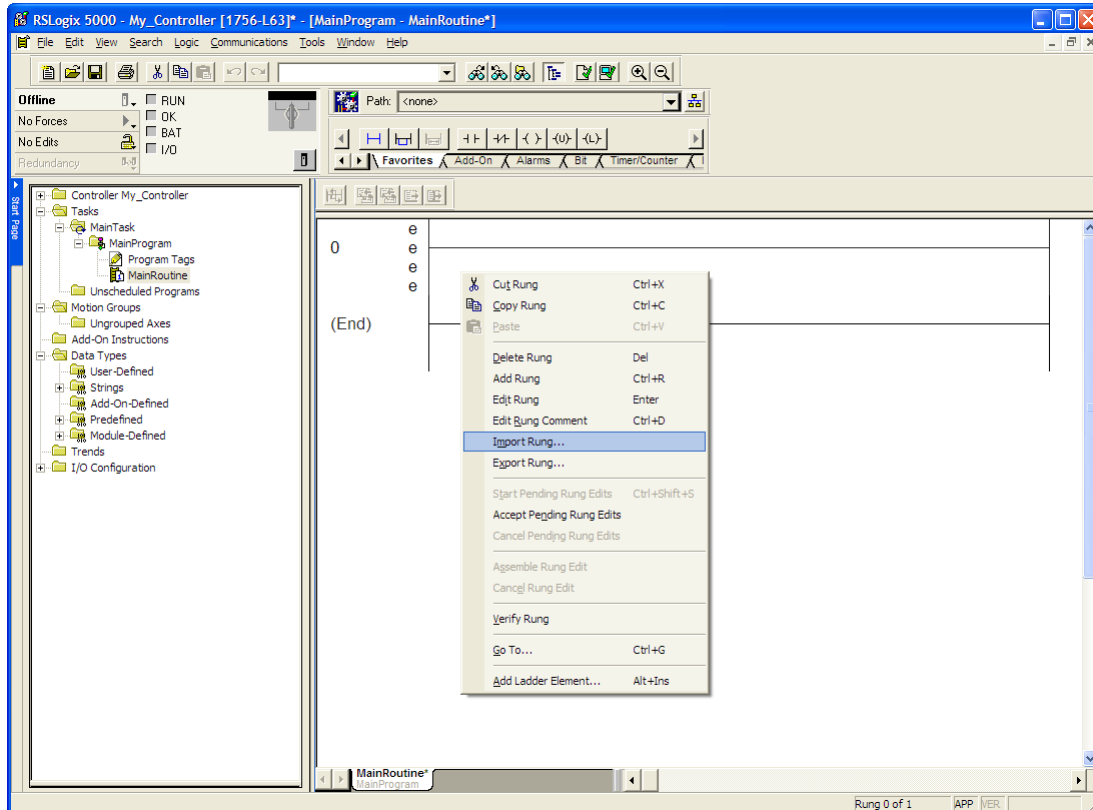
10 On the **CONNECTION** tab, set the **RPI** value for your project. Fifty (50) milliseconds is usually a good starting value.



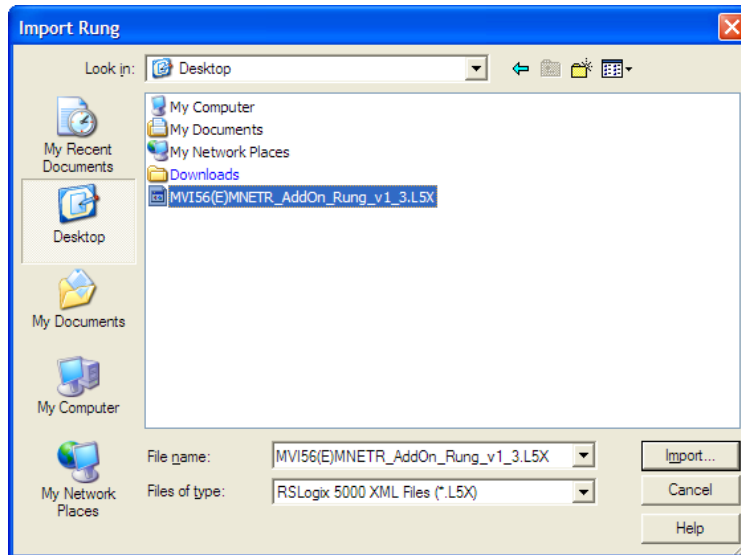
The **MVI56(E)-MNETR** module is now visible in the **I/O CONFIGURATION** section



- 11 In the **CONTROLLER ORGANIZATION** window, expand the **TASKS** folder and subfolder until you reach the **MAINPROGRAM** folder.
- 12 In the **MAINPROGRAM** folder, double-click to open the **MAINROUTINE** ladder.
- 13 Select an empty rung in the new routine, and then click the right mouse button to open a shortcut menu. On the shortcut menu, choose **IMPORT RUNG...**

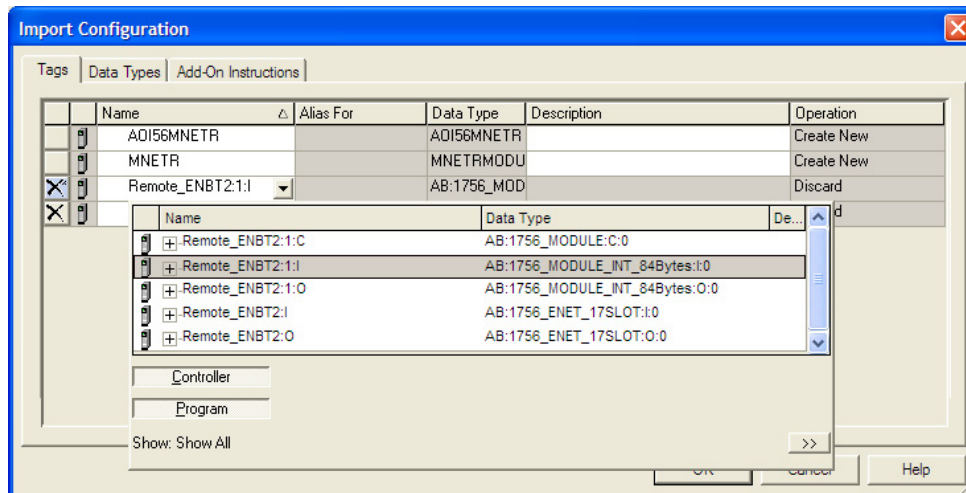


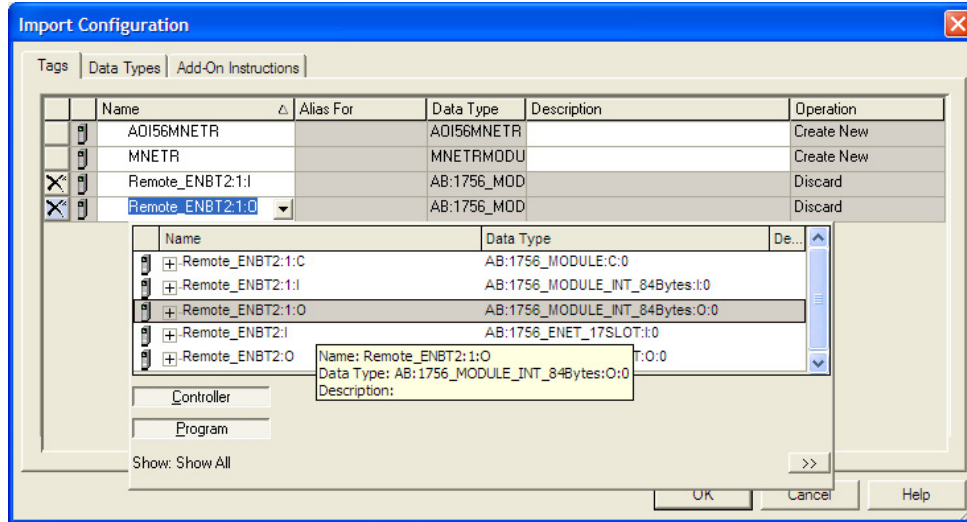
- 14 Navigate to the location on your PC where you saved the Add-On Instruction (for example, "My Documents" or "Desktop"). Select the **MVI56(E)MODBUS TCP/IP ETHERNET\_ADDON\_RUNG\_<VERSION #>.L5X** file



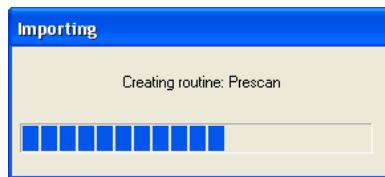
This action opens the **IMPORT CONFIGURATION** dialog box, showing the controller tags that will be created.

- o If you are installing the module in a Remote Rack, open the dropdown menus for the Input and Output tags, and select the Modbus TCP/IP Ethernet module in the remote rack.

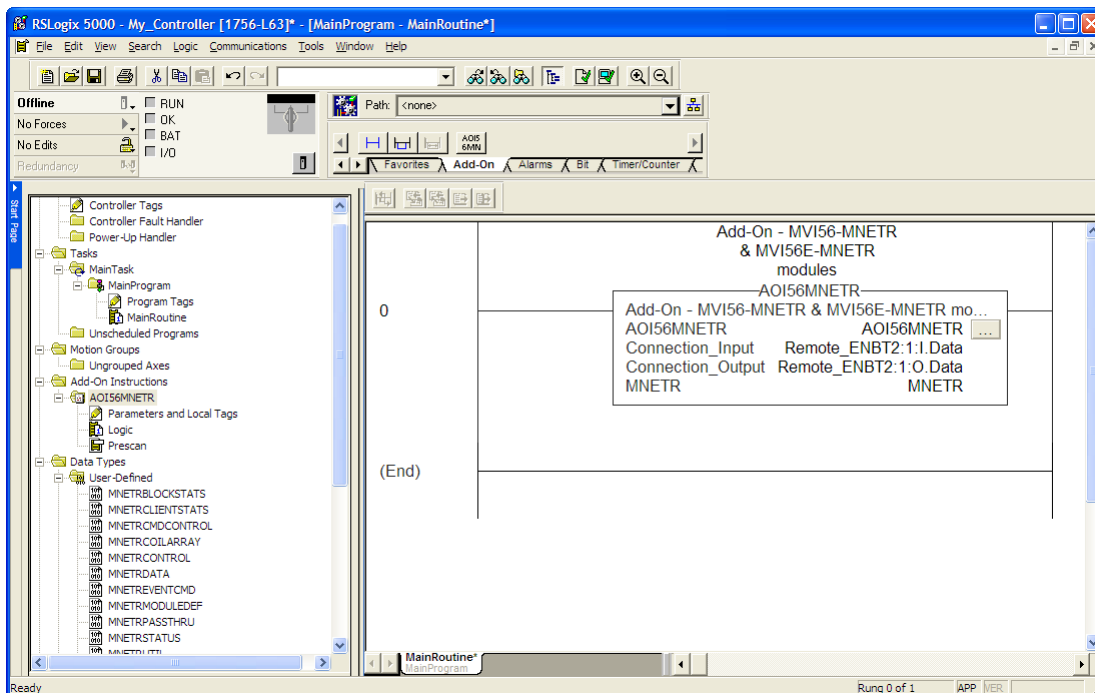




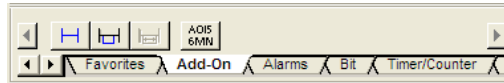
15 Click **OK** to confirm the import. RSLogix will indicate that the import is in progress:



When the import is complete, you will see the new Add-On Instruction rung in the ladder.



The procedure has also imported new User Defined Data Types, data objects and the Add-On instruction for your project.



Save the application and then download the sample ladder logic into the processor.

## Benefits

This process for importing the MVI56(E)-MNETR Add-On Instruction into the RSLogix ladder logic file has replaced the practice of importing User Defined Data Types and multiple rungs of ladder in multiple ladder files.

This enhancement allows you to easily integrate the module into a new or existing RSLogix project without manually copying over each file. Doing so practically eliminates human typographical errors. Additionally, errors that do occur are significantly easier to correct.