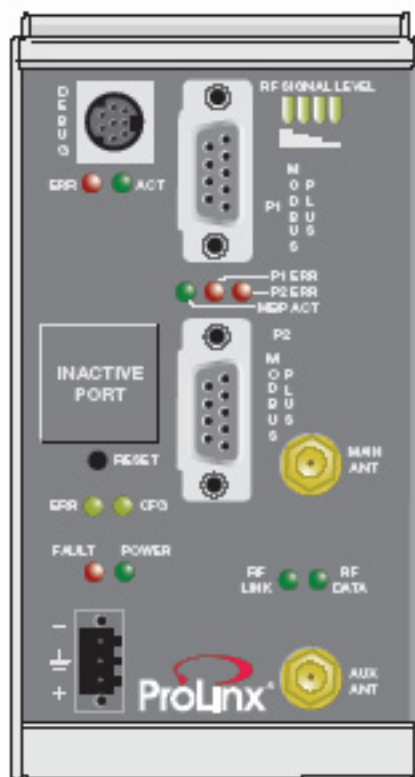
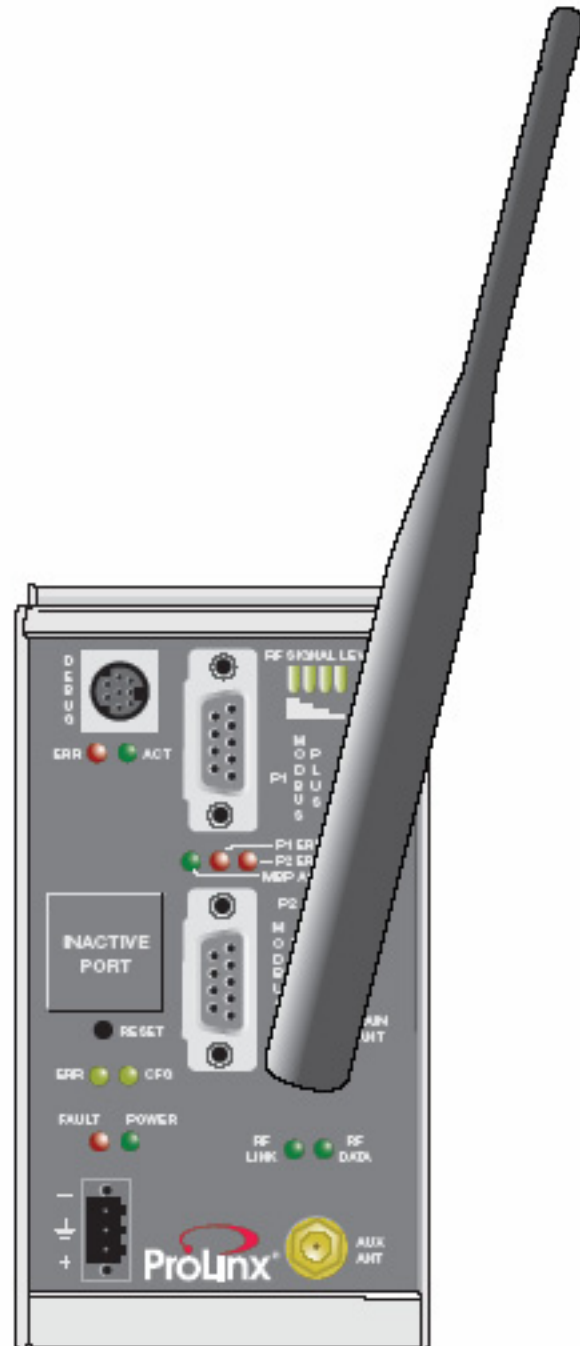


# Quick Start

• Single Site Application



6303-WA-MBP



6303-WA-MBP

# QUICK START

Single Site Application

Modicon Processor with Modbus Plus connection

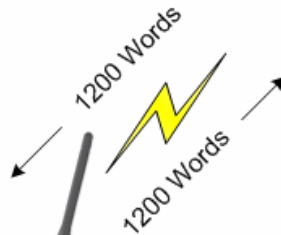


Modbus Plus Node 1

Modbus Plus to P1



6303-WA-MBP (configured as Modbus Plus Node 2)



Remote Site



6303-WA-MBP (configured as Modbus Plus Node 3)

Modbus Plus Remote Node

Modbus Plus to P1



Node 4

**Remote Communications is Easy!**

- ✓ Verify Module Operation
- ✓ Install Your Tools
- ✓ Review the Sample Application
- ✓ Configure the WA-MBP Node 2
- ✓ Configure the WA-MBP Node 3
- ✓ Verify Data Exchange Between Modules

This Quick Start describes a sample application on how to set up a single (point-to-point) site application based on the following scenario:

- A Modbus Plus processor needs to communicate with a remote Modbus Plus node.
- The application uses 2 ProLinx 6303-WA-MBP modules. One module is configured as Modbus Plus Node 2 and the other as Modbus Plus Node 3 to establish communication between the Processor at the main site and the remote Node
- Both of the module's radio communication parameters are preset and configured to pass up to 1200 words in either direction once the sample configurations are loaded.
- The 6303-WA-MBP configured as Node 2 connected to the MODBUS Plus Processor
- The 6303-WA-MBP configured as Node 3 is connected to remote Node 4

---

## Carton Content

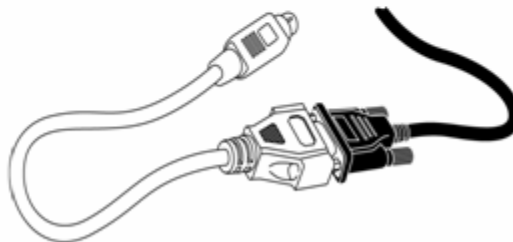
Each 6303-WA-MBP carton contains the following:



5 dBi Omni RP-SMA Articulating Antenna

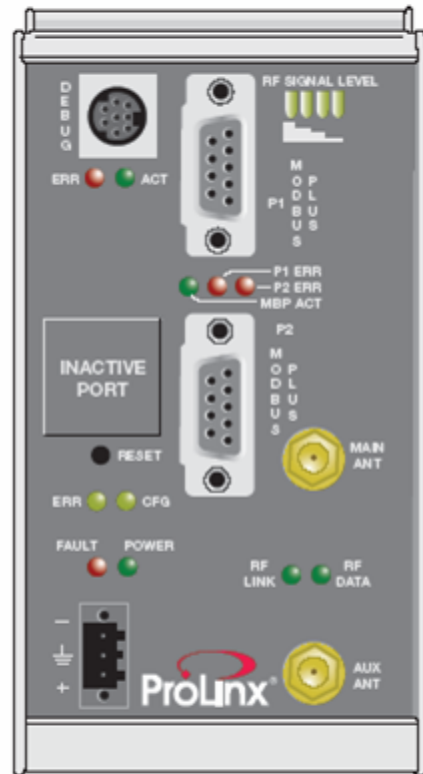


ProLinX Solutions Disc



8-Pin mini-DIN to DB9M Cable

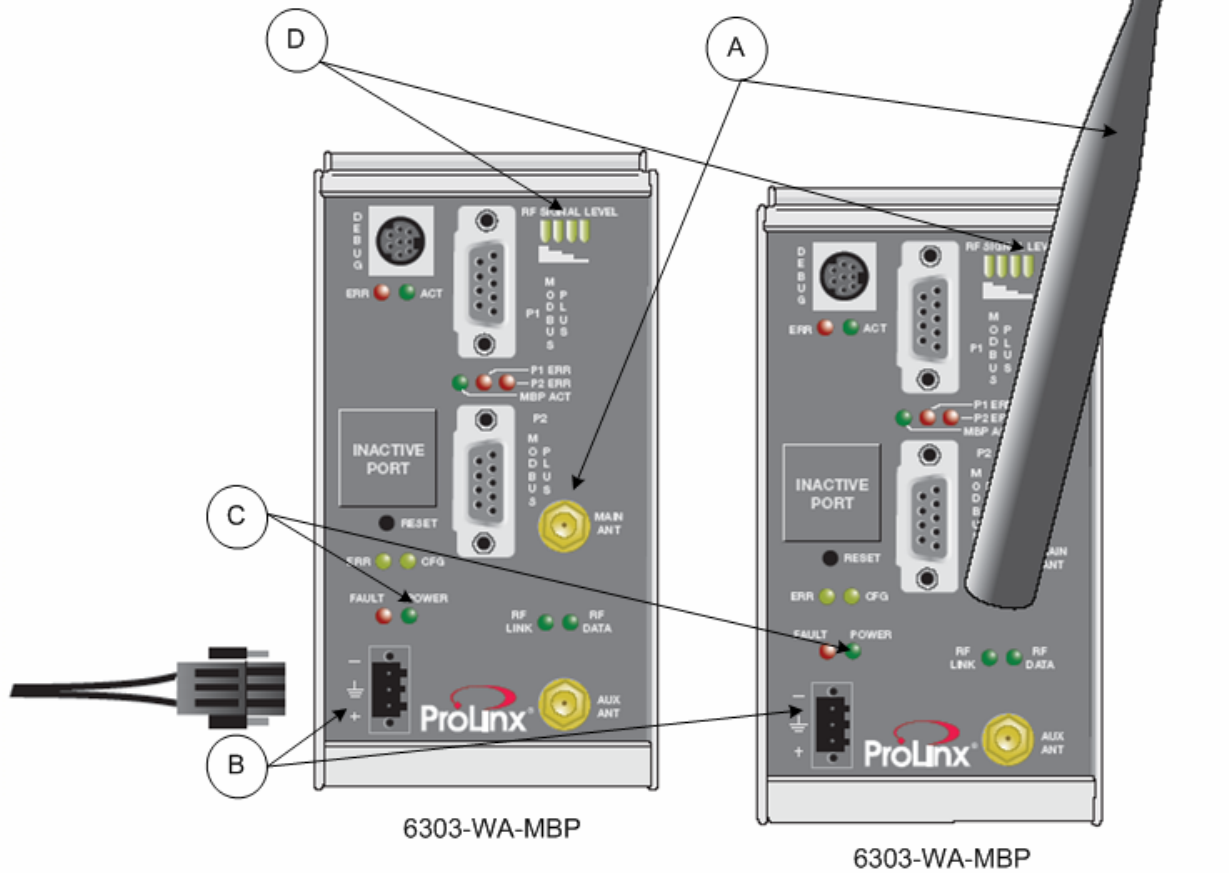
6303-WA-MBP



Null Modem Serial Cable

## 1. Verify Module Operation

- A. Attach 5dBi antenna to the MAIN ANT connector on each module.
- B. Connect power adaptor power to the power port on each of the modules, and then plug the power adaptor into an electrical outlet.
- C. Wait approximately 30 seconds for the module to boot and verify that the POWER LED is On.



---

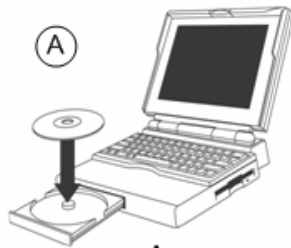
## 2. Install Your Tools

The ProLinux Solutions CD contains everything you need to get started.

Install...

- ❖ ProSoft Configuration Builder to configure ProLinux modules
- ❖ Sample Application Files

### Install ProSoft Configuration Builder



Insert the ProLinux Solutions CD into your PC or Laptop CD-ROM Drive



Click on Install Configuration Tool to launch the install program.

(C)

Follow the prompts to complete the ProSoft Configuration Builder (PCB) configuration tool.

---

## 2. Install Your Tools (cont.)

### Copy the Sample Application Files

(A) On the CD, click **Product Documentation**

(B) Open the **Samples** folder



(C) Open the **Wireless** folder



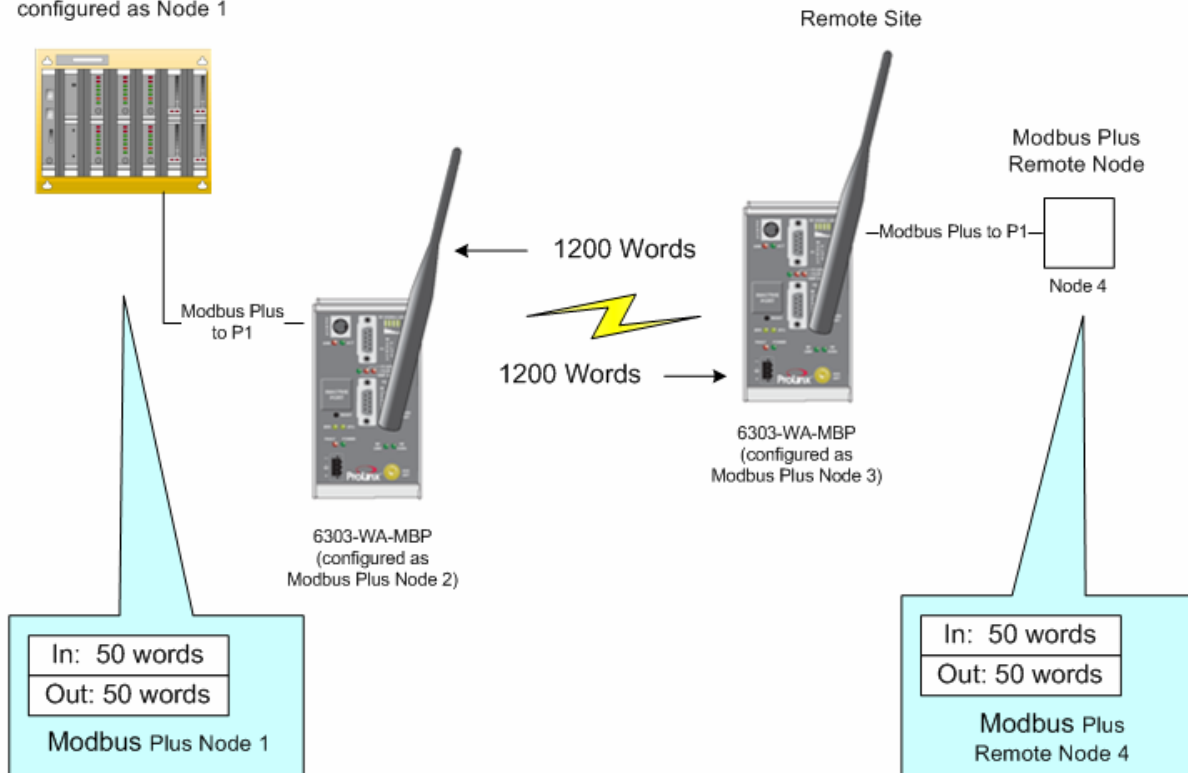
(D) Copy the file **PROLINX WIRELESS SAMPLE.PPF** to your PC.



### 3. Review the WA-MBP to WA-MBP Module Sample Application

The WA-MBP modules will be configured to communicate wirelessly and pass 1200 words of data wirelessly between each other.

MODBUS Plus Processor  
configured as Node 1



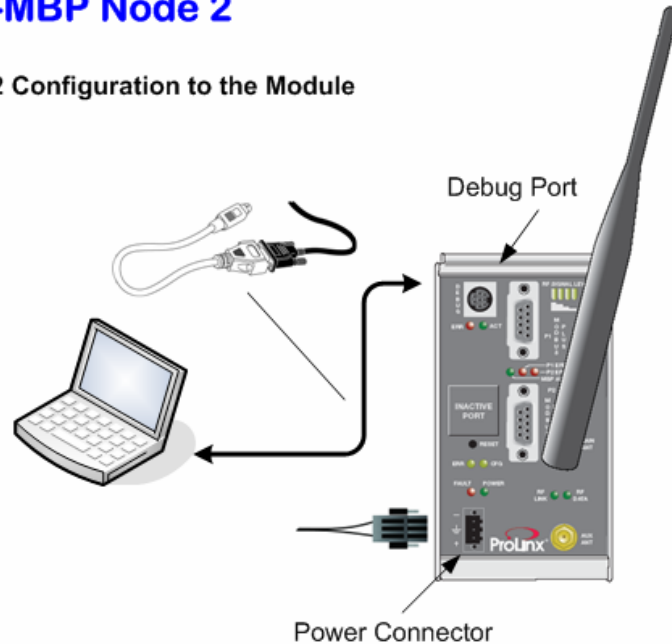
For this sample application, the module connected to the local node will be configured as MBP Node 2. The module connected to the remote node will be configured as MBP Node 3.

In order to get your modules communicating with each other, you must download the sample PPF files to each of the modules. We start by downloading the file to the 6303-WA-MBP Node 2.

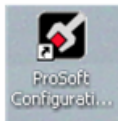
## 4. Configure the 6303-WA-MBP Node 2

### Download the 6303-WA-MBP Node 2 Configuration to the Module

- (A) Make sure the PC or Laptop is connected to Debug Port on the 6303-WA-MBP module to be configured as MBP Node 2. Ensure that power is applied to the module.



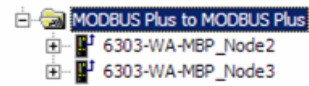
- (B) Start PCB on your PC or Laptop.



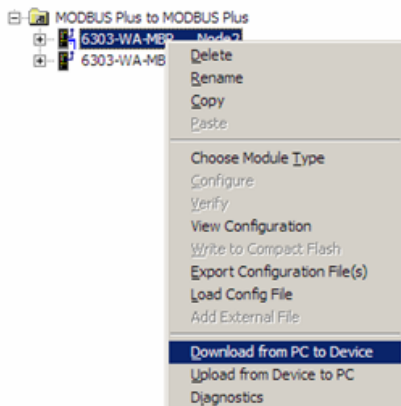
- (C) Choose File → Open and navigate to the location on your PC or Laptop where you stored the PPF file. Choose the file.



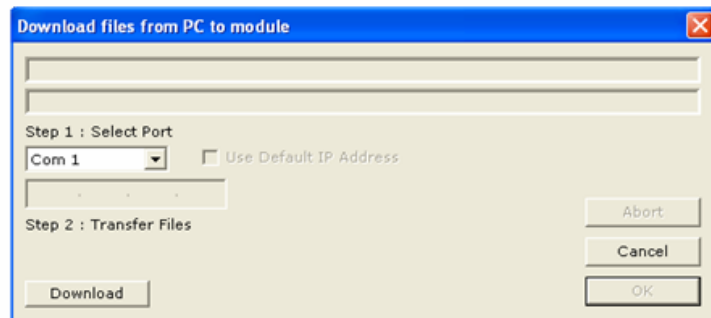
- (D) Expand the MODBUS Plus to MODBUS Plus folder.



- (E) Right-click on 6303-WA-MBP Node 2 and select Download from PC to Device



- (F) Select the appropriate COM port and click the Download button.



When the download completes, the OK button becomes enabled. Click the OK button when the download finishes.

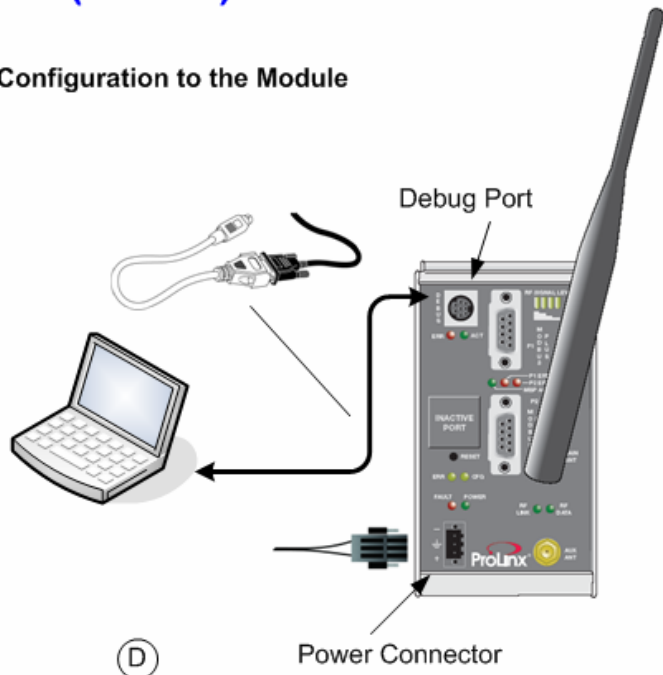
**Note:** The Debug Err LED may be flashing if no device is connected to the module. This is normal behavior until a device is connected.



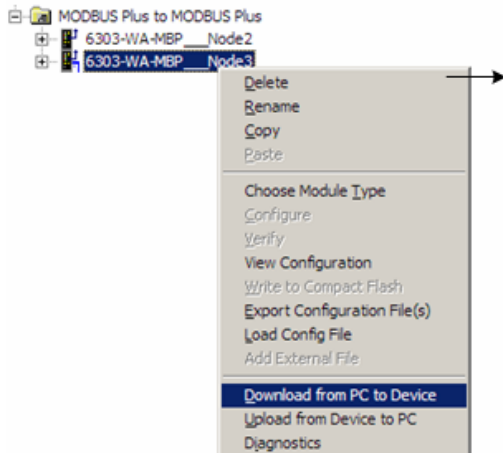
## 5. Configure the 6303-WA-MBP (Node 3)

### Download the 6303-WA-MBP Node 3 Configuration to the Module

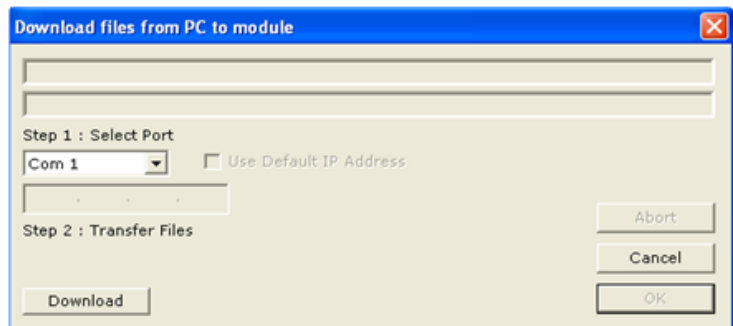
- (A) Unplug the connector from the newly configured Modbus Plus Node 2 module and plug the connector into the Debug port of the other 6303-WA-MBP.
- (B) Ensure that power is applied to the module.



- (C) Right-click on 6303-WA-MBP Node 3 and select Download from PC to Device



- (D) Select the appropriate COM port and click the Download button.



When the download completes, the OK button becomes enabled. Click the OK button when the download finishes.

The RF Link and RF Data LEDs on both modules will illuminate.

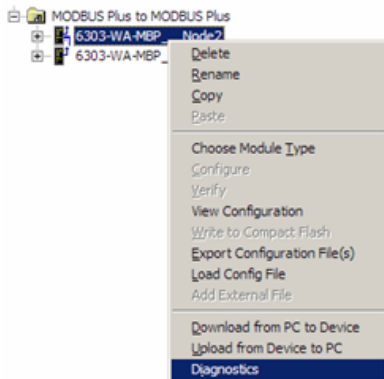
## 6. Verify Data Communications Between Modules

### Run Diagnostics Using PCB

- (A) Move the connector from the Debug Port on the Node 3 module and plug it into the Debug Port of the Node 2 module. Ensure that power is applied to both modules.

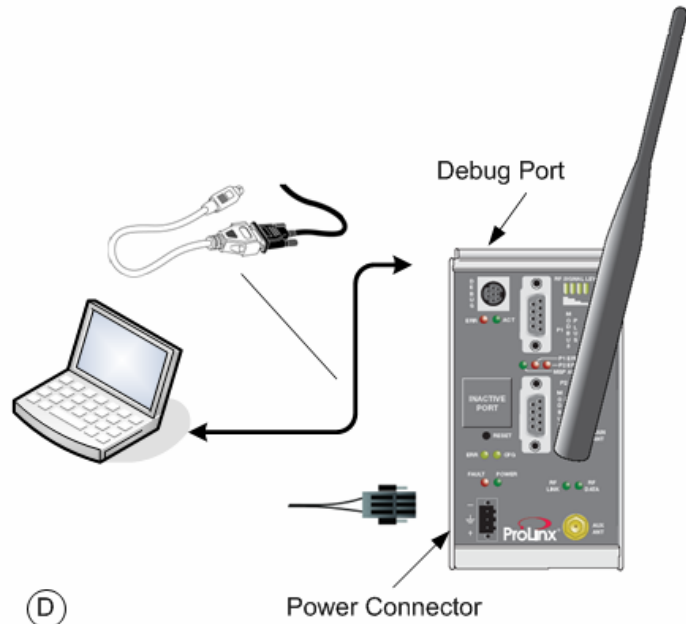
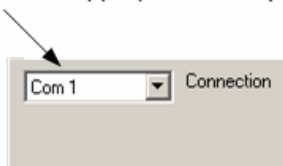
(B)

Right-click on 6303-WA-MBP Node 2 and select Diagnostics.



(C)

Select the appropriate Com port



(D)

Press “?” to display the Diagnostic menu.

Press “D” to display the Database menu.

Press “3” to show database registers beginning at 3000.

Press the “S” key to refresh the database values. The circled values in the example should change each time you press the “S” key indicating that data is being passed between modules. If these values do not change, contact ProSoft Technical Support.

Diagnostics										Time : 09.08.38
0	0	0	0	0	0	0	0	0	0	0
0	0	0	0	0	0	0	0	0	0	0
0	0	0	0	0	0	0	0	0	0	0
0	0	0	0	0	0	0	0	0	0	0
0	0	0	0	0	0	0	0	0	0	0
3	DATABASE DISPLAY 3000 TO 3099 (DECIMAL)									
-19884	17957	-4222	13	0	-19885	17957	6817	12	0	0
0	0	0	0	0	0	0	0	0	0	0
0	0	0	0	0	0	0	0	0	0	0
0	0	0	0	0	0	0	0	0	0	0
0	0	0	0	0	0	0	0	0	0	0
0	0	0	0	0	0	0	0	0	0	0
0	0	0	0	0	0	0	0	0	0	0
0	0	0	0	0	0	0	0	0	0	0
0	0	0	0	0	0	0	0	0	0	0
0	0	0	0	0	0	0	0	0	0	0

The data shown represents clock values originating from the 6303-WA-MBP Node 2. The values are stored in 5 registers beginning with register 3000. The clock values are being passed wirelessly to the 6303-WA-MBP Node 3. The WA-MBP Node 3 module is taking this data and passing it back to the WA-MBP Node 2 and placing it into 5 registers beginning at register 3005.

---

## Success!

At this point, you've....

- Installed the software and copied all files you'll need
- Downloaded the sample configuration to the WA-MBP Node 2
- Downloaded the sample configuration to the WA-MBP Node 3
- Verified that the 6303-WA-MBP (Node 2) and 6303-WA-MBP (Node 3) are communicating and exchanging data

This Quick Start provided you with a pre-configured sample wireless network. You can now use this same sample application and modify it to meet the needs of your application. The *ProLinx 6000 Setup Guide* provides step-by-step information on how the sample configuration was built and how you can modify it.