

# Secure Remote Access — Wired or Cellular

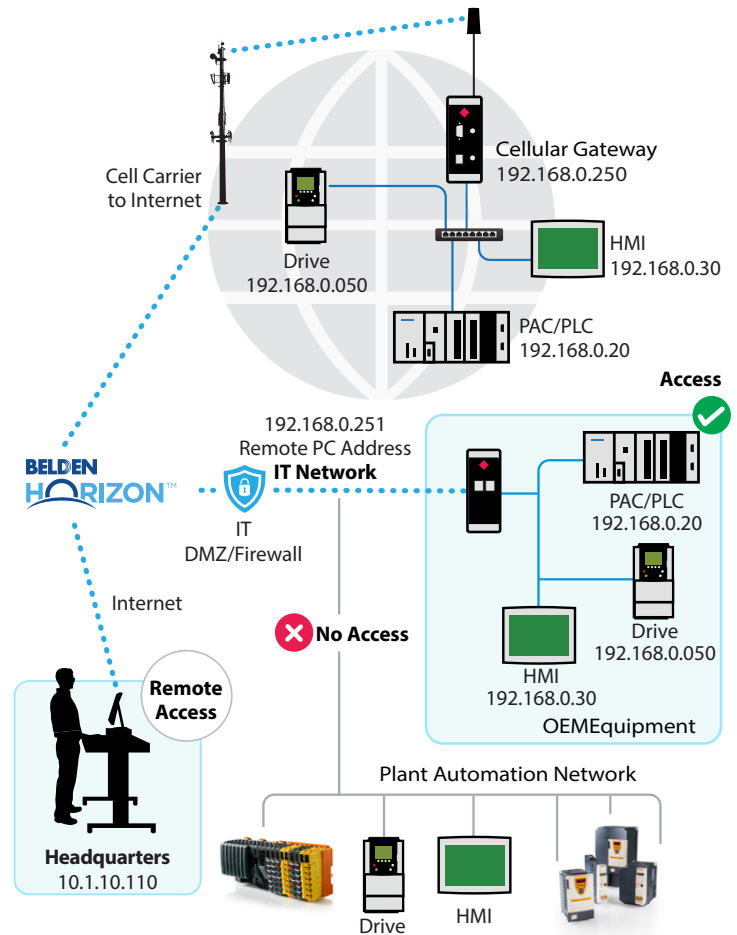
## Reduce Support Travel Costs

Enables remote access to machines for commissioning, troubleshooting, or maintenance. We help keep your enterprise connected so you can focus on the company's bigger picture.

## Belden Horizon™

### SECURE CLOUD-NATIVE PLATFORM

- EasyBridge™ technology enables your PC to act like it is connected directly to a switch on the remote network
- Uses your PC's operating system VPN, which minimizes the need for user-installed software
- Allows software tools such as RSWho, Studio 5000®, Unity, TIA Portal, and more to work without any routing
- HTTPS for site authentication and data encryption
- Provides an AES256 encrypted Layer 2 VPN connection
- Supports more than one tunnel at the same time
- Please contact us for more information



## 4G LTE Cellular Solution ICX35-HWC

- 4G LTE for long-term cell carrier support
- Supports AT&T, Verizon, and many other global carriers



## Ethernet Solution PLX35-NB2

- 2 isolated Ethernet ports separate your IT and OT networks
- Enable/Disable remote access locally via an EtherNet/IP™ message

# How would you benefit from secure remote access solutions?

## Monitoring Italian water treatment plants from Canada

Novus s.r.l. wanted to monitor its Milan water treatment plants from its headquarters in Canada. With a remote access solution, they can now oversee the control of sensors in the plants without hopping on a plane. Learn more: [psft.com/CQK](https://psft.com/CQK)

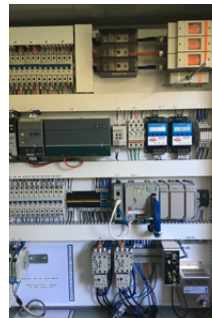


## Making sure packaged electrical equipment keeps cool

A major oil and gas company with a location in Kazakhstan needed to ensure the cooling of its packaged electrical equipment. This required costly site visits by the system integrator. Now, the company's EtherNet/IP™-based controller, with the help of ProSoft's cellular remote access solution, sends an alarm to a maintenance employee's cell phone. The result? Operating costs have been reduced by 50 percent. Learn more: [psft.com/CQL](https://psft.com/CQL)

## Monitoring a city's remote lift stations

The city of Medford, Oregon's wastewater division had to make sure the city's five remote lift stations were working correctly. With the addition of six cellular remote access solutions, they're able to monitor their equipment from a computer, thanks to Belden Horizon, and have reduced transportation costs. Learn more: [psft.com/CR4](https://psft.com/CR4)



## Romania water company sees dual benefits

A water company needed to get information from its pumping and water treatment stations using ProSoft's cellular remote access solution. Its protocol flexibility was a bonus. Learn more: [psft.com/CQM](https://psft.com/CQM)

## Get the ProSoft Technology® Automation Advantage

### Reliability

At ProSoft Technology we don't just sell products. We sell tested, field-proven solutions. We provide products that are developed with end-users in mind. For more than 30 years, ProSoft has been known for our high-quality, reliable solutions

### Tutorial, Educational and Product Videos

Our worldwide Technical Support team is available to assist you with set-up and support throughout the lifecycle of your product. We also have product videos available on our website at [psft.com/CQW](https://psft.com/CQW).

---

### Asia Pacific

Phone: +603.2242.2020

### North America

Phone: +1.661.716.5100

### Europe/M. East/Africa

Phone: +33.(0)5.34.36.87.20

### Latin America

Phone: +52.222.264.1814

