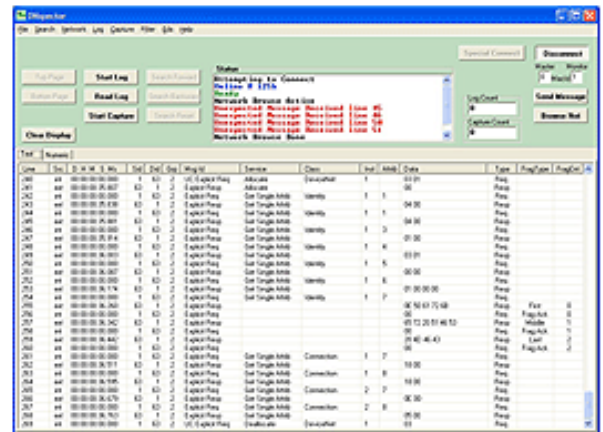


# DATASHEET

## DeviceNet™ Network Analyzer DNSPECTOR

DeviceNet™ Network Analyzer is a monitoring and troubleshooting tool that is useful in different capacities. For product developers this tool is a critical aid for testing and developing products. For electricians this tool allows you to see and filter all of the traffic that occurs on your network in order to diagnose problems efficiently. Any computer running this software with a USB port can provide significant aid in identifying the root cause of complex issues as all requests and responses are visible. In addition to using this tool to discover issues in the field, DeviceNet Network analyzer is capable of being configured to send custom test messages to various devices, and to record the results of these queries. The USB cable with CAN bus dongle is included with the software and can be plugged into a network to start capturing data within seconds.



### Key Features:

- ◆ Live on screen Network monitoring
- ◆ Node number is not required for network monitoring
- ◆ Fully interprets DeviceNet messages
- ◆ Captures data packets for all CAN bus networks
- ◆ Supported on the following Microsoft Operating Systems: Windows Vista, Windows XP, and Windows 2000
- ◆ Logs can be saved to your computer's hard drive
- ◆ Extensive message filter for logging, capturing, and searching.
- ◆ Filter editor supports inclusive or exclusive filters
- ◆ Log and Capture search capabilities
- ◆ Generate standard or custom messages to be sent to a device on the network using a configurable node address
- ◆ Messages can be preconfigured in a file, or manually entered in a dialog box
- ◆ Configurable delay time for sending messages allowing for slower device responses
- ◆ Numeric display available in both DeviceNet and J1939 network mode
- ◆ Root cause identification for "Identity Mismatch" errors are supported through the Network Browse feature
- ◆ Network configuration files can be created through browsing your network, or through offline configuration, and can be saved for later re-use
- ◆ Supports all DeviceNet Baud Rates (125K, 250k, or 500k)
- ◆ Supports J1939 Baud Rates of 10k, 20k, 40k, 50k, or 100k
- ◆ Custom baud rate support

# Ordering Information

## DNSPECTOR

### DeviceNet™ Network Analyzer

#### How to Contact Us: Sales and Support

Sales and Technical Support for this product are provided by ProSoft Technology. Contact our worldwide Sales or Technical Support teams directly by phone or email:

##### Asia Pacific

+603.7724.2080, [asiapc@prosoft-technology.com](mailto:asiapc@prosoft-technology.com)

##### Europe – Middle East – Africa

+33 (0) 5.34.36.87.20, [Europe@prosoft-technology.com](mailto:Europe@prosoft-technology.com)

##### North America

+1.661.716.5100, [support@prosoft-technology.com](mailto:support@prosoft-technology.com)

##### Latin America (Sales only)

+1.281.298.9109, [latinam@prosoft-technology.com](mailto:latinam@prosoft-technology.com)