

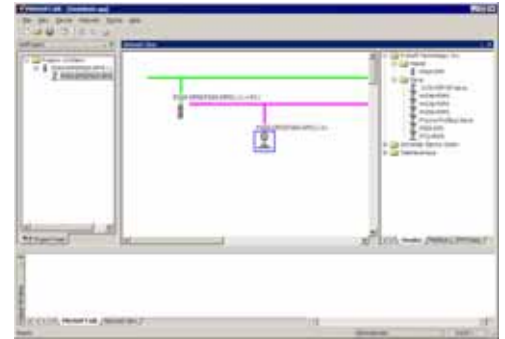
## PROSOFT.fdt

### PS69 PROFIBUS DP Master Configuration Software

PROSOFT.fdt is an FDT (Field Device Tool) compatible frame application that allows you to easily create, configure and monitor PROFIBUS networks using the PS69-DPM Master and any compatible PROFIBUS DP Slave device.

Use the simple drag-and-drop interface to select PROFIBUS DP devices from the device catalog. Double-click on any selected device to configure device properties, device IDs and memory addresses.

The diagnostic mode polls devices cyclically, and presents color-coded status. Double clicking on 'red' bus participants, to view the cause of any error in clear text.



Features	Benefits
FDT (Field Device Tool) compatible frame application	Configure communication-capable PROFIBUS DP devices from different manufacturers in a single, industry standard tool.
Graphical slave input of the fieldbus system	Easy to create, configure and visualize PROFIBUS networks using the PS69-DPM Master and any compatible PROFIBUS DP Slave device
Generic slave DTM	Configuration of the individual bus devices without DTM's can be easily integrated. Turns any GSD into a DTM automatically when using the PROSOFT.fdt software.
PS69 master DTM	The module and network are configured using the master DTM as well as serve as a communication DTM for device DTM's. The master DTM is automatically installed with PROSOFT.fdt
On-line diagnostic and statistic functions	The master DTM provides the module and network diagnostics when using any compatible FDT frame such as FieldCare or PACTware

## FDT Technology

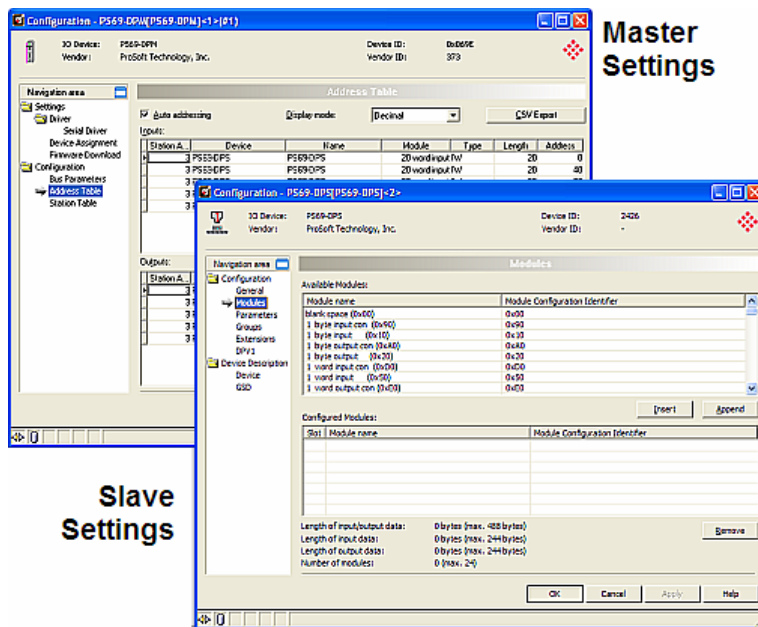
FDT Technology closes the fieldbus gap by providing a standard way for device vendors to create user interfaces for advanced device management. FDT helps fulfill the true promise of fieldbus setup and configuration and complements other technologies such as Electronic Device Description Language (EDDL). FDT allows device manufacturers to install a single DTM (Device Type Manager) driver for a device for use with multiple Windows software products such as Asset Management, PLC programming and device configuration and parameterization. FDT provides a workspace environment for the DTM's to be configured and a method for communication (communication DTM or comDTM) to connect from the PC to the respective field device. ProSoft Technology, Inc is a member of the FDT JIG.



# System Requirements

- PC with 1 GHz processor or higher
- Windows 2000 (Service Pack 2 or higher) or Windows XP (either Home or Professional Edition)
- Internet Explorer 5.5 or higher
- Adobe Acrobat Reader 4.0 or higher
- Free disk space: 10-15 MByte
- CD ROM drive
- RAM: min. 256 MByte
- Graphic resolution: min. 1024 x 768 pixel
- Keyboard and Mouse

# Examples



## Device Catalog



## Project Documentation



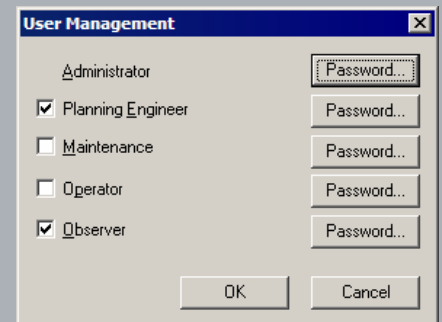
### Master Settings:

- Auto detect configuration port and settings
- Autoscan and detect master modules
- Configure PROFIBUS master bus parameters
- Review Master scan list table and cyclic data addressing
- Review Station Table
- Export master configuration dbm, csv & xml format
- Print configuration
- Firmware update

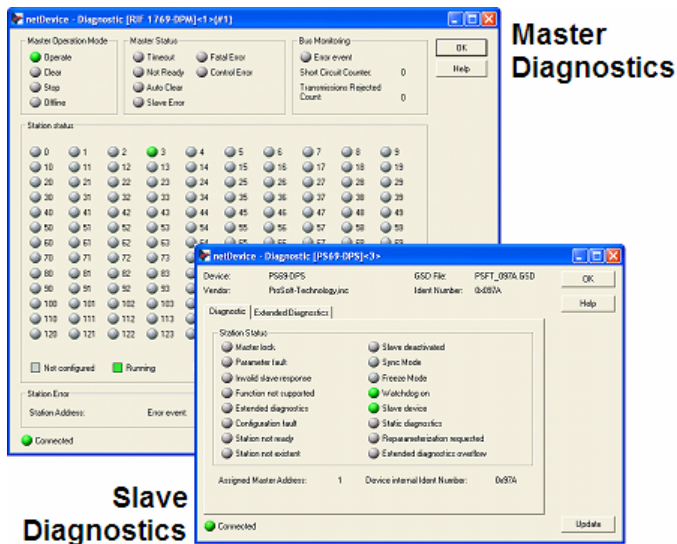
### Slave Settings:

- Generic slave DTM turns any GSD file into a DTM
- Configure and view station address, parameters, groups, diagnostics
- Default slave parameters and diagnostic messages are obtained automatically from the GSD file
- Assign Slave input and output offsets
- Configure PROFIBUS DPV1 slave parameters

## Assign User Privileges



## Examples (continued)



### Master Diagnostics:

- Monitor the operating condition of the PROFIBUS Master via the serial port
- Graphical view of Master Operation Mode, Master and Station Status, Bus Monitoring.
- Color coded display indicates running, error, diagnostic and unconfigured status for each station.

### Slave Diagnostics:

- Basic and Extended diagnostic screens available
- Detailed station status display for common conditions
- Extended diagnostics screen for uses information from slave's GSD file to describe slave error states.

## Availability

PROSOFT.fdt is included as an installable application with the PS69-DPM PROFIBUS DPV1 Master for CompactLogix.



## Additional Products

ProSoft Technology® offers a full complement of hardware and software solutions for a wide variety of industrial communication platforms.

Visit our web site at <http://www.prosoft-technology.com> for a complete list of products.

## Ordering Information

Use the following Ordering Information to identify the radio product needed for your region. If you are unsure which radio to select, please contact your local distributor.

## Configurator for PS69 PROFIBUS DP Master

PROSOFT.fdt

To place an order, please contact your local ProSoft Technology distributor. For a list of ProSoft Technology distributors near you, go to <http://www.prosoft-technology.com>

Distributors:

Place your order by email or fax to:

North American / Latin American / Asia Pacific

[orders@prosoft-technology.com](mailto:orders@prosoft-technology.com),

fax to +1 661.716.5101

Copyright © ProSoft Technology, Inc. 2000 - 2008. All Rights Reserved.. September 08, 2008

Specifications subject to change without notice.